

**DEAL No.: 35582**

**DATE: 25 MARCH - 11 MAY 2024**

# UNIQUE DEALS



**BIGGER SAVINGS. BETTER LIVING**



**RSA ONLY.**

**ALL JOY VERI PERI ASSORTED**

12 x 250ml

**386.88**

case

**32.24 each**



**ALL JOY TOMATO SAUCE**

6 x 2Lt

**293.40**

case

**48.90 each**



6 x 750ml

**150.83**

case

**25.14 each**



**ALL JOY SOYA SAUCE**

12 x 250ml

**316.33**

case

**26.36 each**







**ALPEN FOOD CO.**

**EXCLUDING NAMIBIA & BOTSWANA.**



**KORO KRUNCH  
WHOLEWHEAT  
FLAKES**

**24 x 400g**

**297.13**  
case

**12.38 each**

**ALPEN NUTRIFIC  
WHEAT BISCUIT CEREAL**

**8 x 1.35Kg**

**571.27**  
case

**71.41 each**

**ALPEN NUTRIFIC  
WHEAT BISCUIT**

**24 x 225g**

**316.42**  
case

**13.18 each**



**RSA ONLY.**

**SUPER CREAMS  
ASSORTED**

**12 x 125g**

**71.09**  
case

**5.92 each**





**EPIC**

**RSA ONLY.**



**EPIC ORIGINAL  
MAYONNAISE**

12 x 750g

**225.15**  
case

**18.76 each**

**OLE LOW FAT SPREAD  
BRICK**

30 x 500g

**431.79**  
case

**14.39 each**

**OLE LOW FAT SPREAD  
TUB**

12 x 1Kg

**311.65**  
case

**25.97 each**



**ESKORT**

**RSA ONLY.**



**ESKORT STREAKY  
BACON**

25 x 200g

**1000.50**  
case

**40.02 each**



**ESKORT BACON CUTTS**

5 x 1Kg  
**623.88**  
 case  
**124.78 each**



**ESKORT DICED BACON**

25 x 200g  
**747.50**  
 case  
**29.90 each**



**ESKORT ROUND CUT BACON**

25 x 200g  
**747.50**  
 case  
**29.90 each**



**ESKORT SHOULDER BACON**

25 x 200g  
**790.62**  
 case  
**31.62 each**



**ESKORT RINDLESS BACK BACON**

25 x 200g  
**920.00**  
 case  
**36.80 each**



**ESKORT FRENCH POLONY**



12 x 500g  
**261.92**  
 case  
*21.83 each*

4 x 2Kg  
**317.08**  
 case  
*79.27 each*

10 x 750g  
**299.00**  
 case  
*29.90 each*

4 x 2.5Kg  
**395.60**  
 case  
*98.90 each*

6 x 1Kg  
**249.92**  
 case  
*41.65 each*

**ESKORT GARLIC POLONY**

6 x 1Kg  
**249.92**  
 case  
*41.65 each*



**CHAMPION FRENCH POLONY**

4 x 2Kg  
**276.00**  
 case  
*69.00 each*

**CHAMPION FRENCH POLONY**

10 x 750g  
**264.50**  
 case  
*26.45 each*





**ESKORT CHOPPED HAM ROLL**

12 x 500g  
**552.00**  
 case  
 46.00 each



**ESKORT LIVER SPREAD**

20 x 500g  
**484.84**  
 case  
 24.24 each



**ESKORT LIVER SPREAD**

24 x 250g  
**380.05**  
 case  
 15.84 each



**ESKORT CHICKEN POLONY**

4 x 2.5Kg  
**598.00**  
 case  
 149.50 each

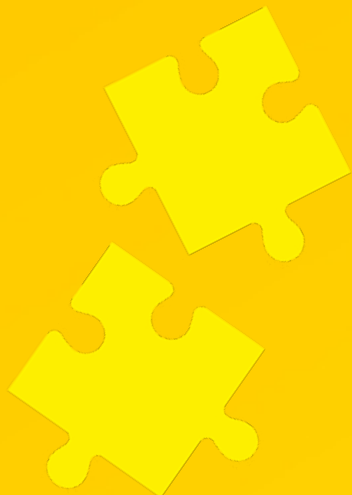
**ESKORT CHICKEN VIENNAS**

12 x 500g  
**593.40**  
 case  
 49.45 each

**ESKORT CHICKEN POLONY**

10 x 750g  
**437.00**  
 case  
 43.70 each





**ESKORT SMOKED/ RED PALE VIENNAS**



**6 x 1Kg**  
**410.55**  
 case  
**68.42 each**

**12 x 500g**  
**400.20**  
 case  
**33.35 each**

**ESKORT RUSSIANS**

**12 x 500g**  
**662.40**  
 case  
**55.20 each**



**ESKORT RUSSIANS**  
**4 x 2Kg**  
**869.40**  
 case  
**217.35 each**



**ESKORT CHEESE RUSSIANS**

**12 x 500g**  
**717.60**  
 case  
**59.80 each**







**JUICES**

**RSA ONLY.**



**TROPIKA MILK BLEND  
DFM ASSORTED**

2Ll

**31.35**  
case

**31.35 each**



**OIL & MAYONNAISE**

**RSA ONLY.**



**CLASSIC MAYO  
ASSORTED**

2 x 6 x 750g

**353.00**  
case

**29.42 each**





**OTHER**

**RSA ONLY.**



**CLOVER SWEETENED FULL CREAM CONDENSED MILK**

4 x 6 x 385g

**626.80**

case

**26.12 each**



**CLOVER BUTTER GHEE**

6 x 1.5Kg

**1351.43**

case

**225.24 each**



**POWDERS & UHT**

**RSA ONLY.**

**CLOVER CREAMEL CREAMER**

20 x 750g

**738.07**

case

**36.90 each**







**RSA ONLY.**

### CROWN CHICKEN SPICE SEASONING

25 x 200g

**367.23**

case

**14.69 each**



### CROWN BBQ SIX GUN GRILL

10 x 1Kg

**828.04**

case

**82.80 each**



### CROWN BBQ WITH GARLIC SEASONING

25 x 200g

**558.08**

case

**22.32 each**



### CROWN BBQ SIX GUN GRILL

10 x (50 x 20g)

**868.19**

case

**86.82 each**



### CROWN BRAAI SPICE SEASONING

25 x 200g

**431.74**

case

**17.27 each**



# Dairy Group



**RSA ONLY.**

## CREAMLINE UHT FULL CREAM MILK

6 x 1Lt

**90.53**  
case

**15.09 each**

## CREAMLINE UHT MEDIUM FAT DAIRY BLEND

6 x 1Lt

**83.43**  
case

**13.91 each**



## CREAMLINE BUTTER SALTED

30 x 500g

**1637.05**  
case

**54.57 each**







**RSA, LESOTHO,  
BOTSWANA, NAMIBIA &  
SWAZILAND.**

**COUNTRY FRESH  
ASSORTED**

6 x 1.8Lt

**321.06**

case

**53.51 each**



**FARMHOUSE ICE  
CREAM ASSORTED**

6 x 2Lt

**280.07**

case

**46.68 each**



**GELATA ROMA/ NESTLE  
PREMIUM ICE CREAM  
ASSORTED**

6 x 1.5Lt

**512.32**

case

**85.39 each**



**CADBURY DAIRYMILK/  
CRUNCHIE/ OREO STICK  
ASSORTED**

20 x 90ml

**444.01**

case

**22.20 each**



**CADBURY DAIRYMILK  
MULTI PACK**

6 x 6 x 60ml

**560.14**  
case

**15.56 each**



**DANONE**

**RSA ONLY.**

**DANONE YOGI SIP  
DRINKING YOGHURT  
ASSORTED**

10 x 250g

**102.79**  
case

**10.28 each**



**INKOMAZI MAAS  
MEDIUM FAT**

6 x 1.8Kg

**153.72**  
case

**25.62 each**



**NUTRIDAY SMOOTH  
YOUGHURT ASSORTED**

8 x (6 x 100g)

**141.30**  
case

**17.66 each**







**DANONE DANUP 2 IN 1 ASSORTED**

8 x 950g

**155.54**

case

**19.44 each**

**DANONE ULTRA MEL CUSTARD ASSORTED**

10 x 1Lt

**277.28**

case

**27.73 each**



**EASTERN TRADING  
COMAPNY**



**RSA ONLY.**

**DURSOTS BEANS IN  
TOMATO SAUCE**

12 x 410g

**120.56**  
case

**10.05 each**



**DURSOTS BEANS IN  
TOMATO SAUCE**

6 x 3Kg

**518.27**  
case

**86.38 each**



**DURSOTS  
CHAKALAKA WITH  
BUTTERNUT / BEANS /  
SWEET POTATO /  
SWEETCORN NEW**

12 x 410g

**170.45**  
case

**14.20 each**



**DURSOTS MIXED  
VEGETABLES/  
VEGETABLE CURRY**

12 x 410g

**185.28**  
case

**15.44 each**





**DURSOTS TOMATO & ONION MIX**



12 x 410g  
**157.62**  
 case  
 13.14 each

**DURSOTS PROCESSED PEAS**



12 x 410g  
**132.93**  
 case  
 11.08 each



**EXCLUDING NAMIBIA & BOTSWANA.**

**FUTURELIFE SMART FOOD/ ZERO ORIGINAL BULK ASSORTED**

12 x 1.25Kg  
**1042.64**  
 case  
 86.89 each

**FUTURELIFE HIGH PROTEIN CRUNCH BAR ASSORTED**



10 x 4 x 40g  
**352.95**  
 case  
 8.82 each

30 x 40g  
**289.74**  
 case  
 9.66 each



**FUTURELIFE SMART FOOD 250+50G EXTRA**

12 x 300g  
**296.44**  
 case  
 24.70 each



**FUTURELIFE GRANOLA CRUNCH NUT & SEED**

12 x 600g  
**668.30**  
 case  
 55.69 each



**FUTURELIFE SMART CLASSIC/ ORIGINAL OATS**

12 x 700g/ 500g  
**411.25**  
 case  
 34.27 each

**FUTURELIFE ENERGIZE DRINKING MEAL**

12 x 260g  
**85.21**  
 case  
 7.10 each



**FUTURELIFE GRANOLA CRUNCH ASSORTED**

12 x 700g  
**668.30**  
 case  
 55.69 each







**LAAGER ROOIBOS TEA**

2 x 6 x 160's  
**826.79**  
 case  
*68.90 each*



**EXCLUDING NAMIBIA & BOTSWANA.**

**PHENDULA BLACK TEA**

20 x 10's  
**102.05**  
 case  
*5.10 each*



**TEA TIME ROOIBOS TEA BAGS**

6 x 4 x 80's  
**736.55**  
 case  
*30.69 each*



**SOUTHALLS ROOIBOS TEA POUCH 40'S**

20 x 40's  
**365.61**  
 case  
*18.28 each*



**SOUTHALLS ROOIBOS TEA POUCH 20'S**

20 x 20's  
**209.71**  
 case  
*10.49 each*

# Kellogg's

**RSA & LESOTHO ONLY.**

**KELLOGG'S COCO POPS/  
CHOCO'S/ BIG 5/ CEREAL  
CRUNCHERS/ STRAWBERRY  
POPS**

**16 x 304G/ 350g**  
**684.48**  
case  
**42.78 each**

**KELLOGG'S RICE  
KRISPIES CEREAL  
VANILLA**

**16 x 400g**  
**667.50**  
case  
**41.72 each**



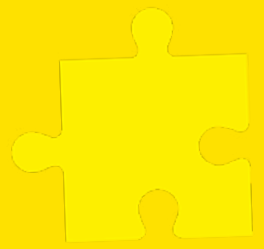
**KELLOGG'S ALL BRAN  
FLAKES CARTON**

**12 x 750g**  
**743.61**  
case  
**61.97 each**



**KELLOGG'S CORN  
FLAKES CARTON**

**14 x 750g**  
**792.90**  
case  
**56.64 each**

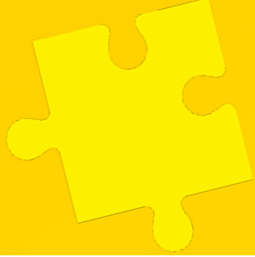




# Kellogg's

TOLORAM NOODLES

**RSA ONLY.**



**KELLOGGS NOODLES ASSORTED**

8 x (5 x 70g)

**211.09**

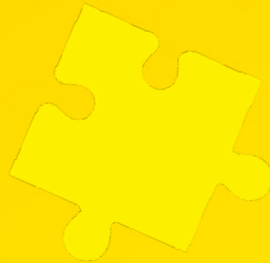
case

**26.39 each**

# Kellogg's

PRINGLES

**RSA & LESOTHO ONLY.**



**PRINGLES POTATO CHIPS ASSORTED**

12 x 100g

**331.19**

case

**27.60 each**

GRUPE  
**LACTALIS**

FRESH

**RSA ONLY.**



**PARMALAT YOGHURT LOW FAT ASSORTED**

6 x 1Kg

**195.60**

case

**32.60 each**

**PARMALAT DOUBLE  
CREAM YOGHURT  
ASSORTED**



6 x 1Kg  
**218.99**  
case  
**36.50 each**

**PARMALAT SMOOTH  
YOGHURT ASSORTED**



8 x (6 x 100g)  
**145.60**  
case  
**18.20 each**



**RSA ONLY.**

**PURE JOY UHT JUICE  
ASSORTED**

4 x 6 x 200ml  
**135.60**  
case  
**5.65 each**



**CABANA UHT  
ASSORTED**



4 x 6 x 200ml  
**135.60**  
case  
**5.65 each**





**PURE JOY JUICE  
UHT ASSORTED**

6 x 1Lt  
**131.40**  
case  
*21.90 each*



**CABANA UHT  
ASSORTED**

6 x 1Lt  
**119.40**  
case  
*19.90 each*



**RSA ONLY.**

**LUCKY STAR BAKED  
BEANS IN TOMATO  
SAUCE**



1 x 12 x 410g  
**140.80**  
case  
*11.73 each*

**LUCKY STAR  
CHAKALAKA  
ASSORTED**



12 x 410g  
**175.69**  
case  
*14.64 each*

**LUCKY STAR SARDINES  
IN VEG OIL**



5 x 10 x 120g  
**895.30**  
case  
*17.91 each*

**LUCKY STAR TUNA CHUNKS ASSORTED**

4 x 6 x 170g

**533.97**  
case

*22.25 each*



**LUCKY STAR SHREDDED TUNA ASSORTED**

4 x 6 x 170g

**448.11**  
case

*18.67 each*



**MARS**

**SNICKERS/ MARS BARS**

24 x 50g/ 51g

**307.34**  
case

*12.81 each*



**TWIX CLASSIC BAR**

25 x 50g

**320.15**  
case

*12.81 each*



**ROYCO DRY COOK IN SAUCE ASSORTED**

20 x 41g/ 50g

**315.82**  
case

*15.79 each*



**M & M'S ASSORTED**

24 x 45g

**341.35**  
case

*14.22 each*





**ROYCO PACKET  
SOUP ASSORTED**

10 x 45g/ 50g

**48.67**

case

*4.87 each*



**ROYCO MARINADE/  
SAUCE/ GRAVY  
ASSORTED**

24 x 32g/ 38g/ 39g/ 40g/ 42g/  
46g/ 47g/ 48g

**334.34**

case

*13.93 each*



**WHISKAS DRY KITTEN/  
CAT FOOD ASSORTED**

10 x 900g

**827.62**

case

*82.76 each*



**WHISKAS POUCH  
ASSORTED**

48 x 85g

**523.31**

case

*10.90 each*



**PEDIGREE PUPPY/  
ADULT POUCH  
ASSORTED**

48 x 100g

**617.80**

case

*12.87 each*



**PEDIGREE DENTASTIX  
DOG TREAT MEDIUM**

10 x 180g  
**535.38**  
 case  
 53.54 each



**PEDIGREE DENTASTIX  
DOG TREAT SMALL**

10 x 110g  
**456.42**  
 case  
 45.64 each



**BEENO FLATTIES /  
MALLOWS / ROLLIES /  
SHAPES ASSORTED**

20 x 120g  
**396.70**  
 case  
 19.84 each

**RSA, LESOTHO, SWAZILAND,  
BOTSWANA & NAMIBIA.**



**BEENO OVALS /  
BISCUITS ASSORTED**

12 x 800g  
**688.60**  
 case  
 57.38 each





**PAMPER WET CAT FOOD ASSORTED**

12 x 385g

**214.12**

case

**17.84 each**



**PAMPER DRY CAT/ KITTEN FOOD ASSORTED**

8 x 2Kg

**1059.38**

case

**132.42 each**



**EPOL WET DOG FOOD ASSORTED**

6 x 820g

**123.72**

case

**20.62 each**



**HUSKY CUTS/ SMOKEY JOE CUTS IN GRAVY ASSORTED**

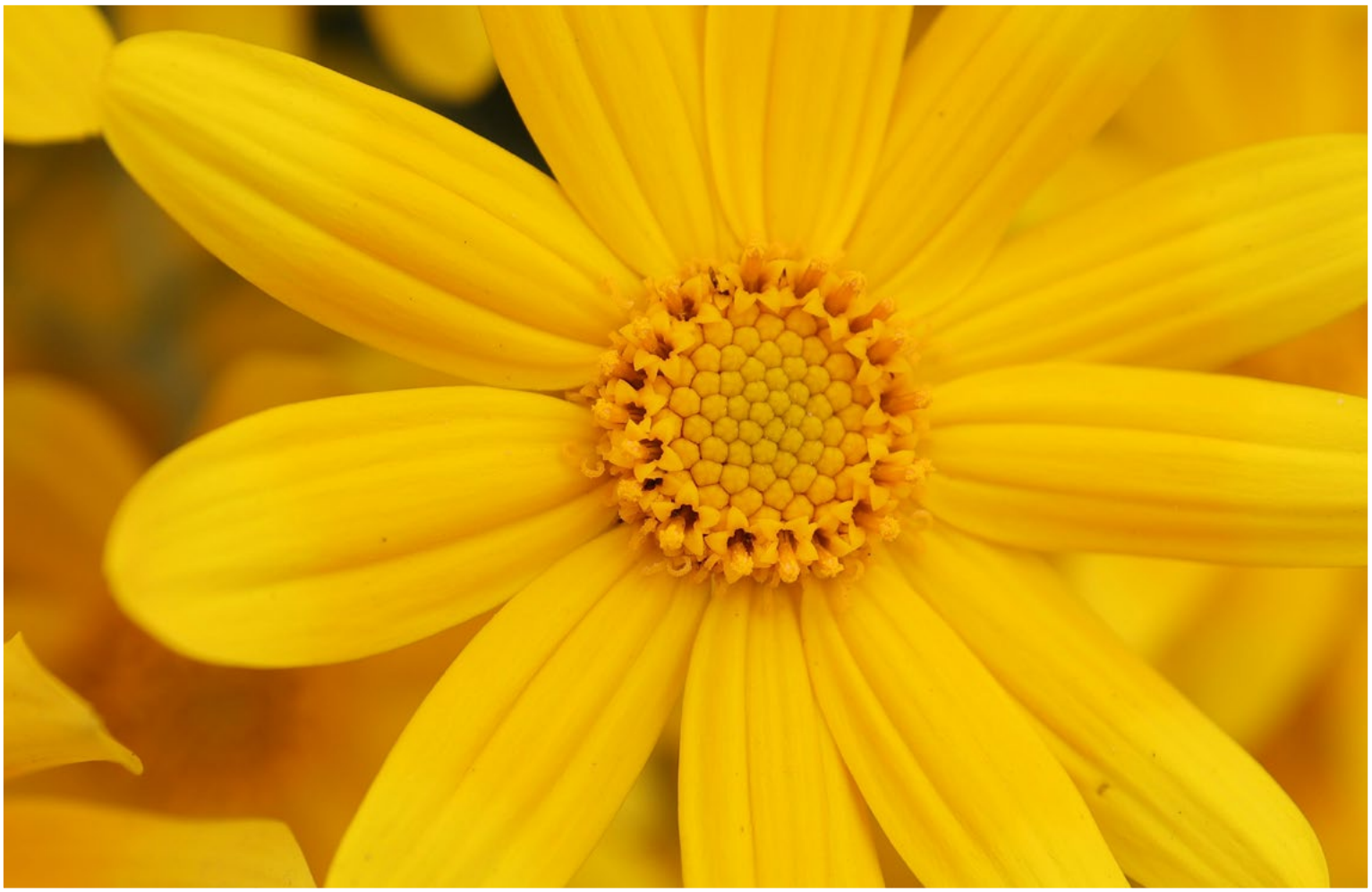
4 x (12 x 85g)

**225.40**

case

**56.35 each**





**RSA ONLY.**

**MIAMI RELISH  
ASSORTED**

**6 x 450g**

**114.12**

**case**

**19.02 each**

**MIAMI ANYTHING  
GOES TOMATO MIX**

**12 x 410g**

**216.40**

**case**

**18.03 each**

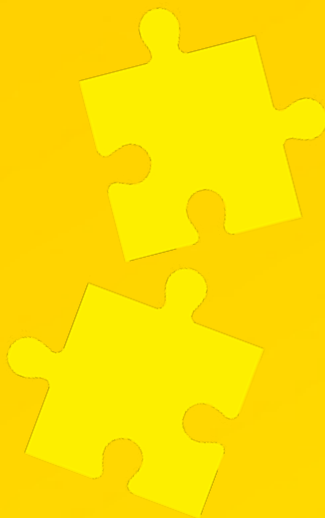




**NATIONAL BRANDS LIMITED**



**EXCLUDING NAMIBIA & BOTSWANA. EXCLUDING 2% BULK ON 200 CASES.**



**HOC HIAM CAPPUCINO/ HOT CHOCOLATE ASSORTED**

**12 x 8 x 24g/ 25g**  
**646.42**  
 case  
**6.73 each**

**HOC HIAM SALTED CARAMEL CAPPUCINO**

**10 x 10 x 24g**  
**646.42**  
 case  
**6.46 each**



**NATIONAL BRANDS LIMITED**



**BISCUITS**

**EXCLUDING NAMIBIA & BOTSWANA. EXCLUDING 2% BULK ON 300 CASES.**



**BAKERS CREAM CRACKER BISCUITS**

**12 x 400g**  
**402.40**  
 case  
**33.53 each**

**BAKERS SALTICRAX BISCUITS ASSORTED**

**12 x 200g**  
**285.13**  
 case  
**23.76 each**



**12 x 200g**  
**225.34**  
 case  
**18.78 each**

**NATIONAL BRANDS LIMITED**



**WILLARDS**

**EXCLUDING NAMIBIA & BOTSWANA.**

**JUMPIN JACK POPCORN ASSORTED**

13 x 90g/ 100g

**210.15**  
case

**16.17 each**

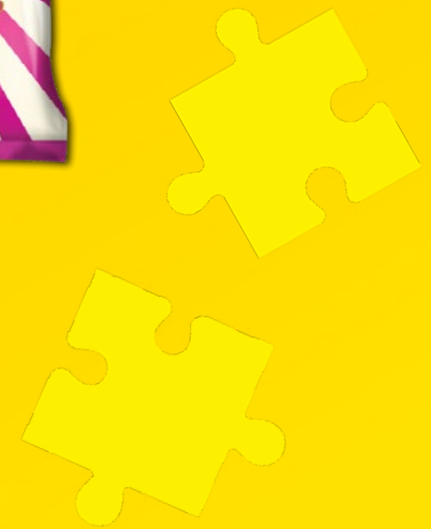


**MONSTER MUNCH ASSORTED**

22 x 100g

**195.32**  
case

**8.88 each**



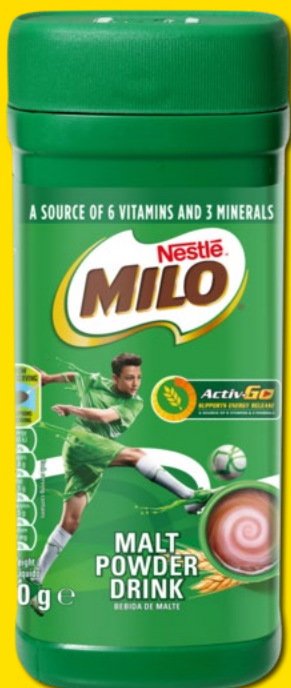
**Nestlé**  
BEVERAGES

**NESTLE MILO GUSSET BAG**

16 x 500g

**1001.88**  
case

**62.62 each**



**NESTLE MILO**

2 x 6 x 250g

**438.55**  
case

**36.55 each**





**NESTLE COCOA**

4 x 6 x 62.5g

**565.61**

case

*23.57 each*



**NESTLE COCOA**

4 x 6 x 125g

**986.40**

case

*41.10 each*



**Nestle**

CHOCOLATES

**NESTLE SMARTIES/ KIT-KAT/ TEX/ BAR ONE MINI BAG ASSORTED**

32 x 152g/ 180g/ 182g/ 189g

**1209.54**

case

*37.80 each*



**NESTLE KIT KAT CHUNKY ASSORTED**

24 x 40g

**232.25**

case

*9.68 each*



**NESTLE MILKYBAR ORIGINAL**

36 x 40g

**348.38**

case

*9.68 each*

**NESTLE AERO/  
SMARTIES/ TEX/ BAR  
ONE ASSORTED**

40 x 40g/ 52g

**387.09**

case

*9.68 each*

**NESTLE KIT KAT  
CHOCOLATE 4 FINGER  
ASSORTED**

48 x 41.5g

**464.51**

case

*9.68 each*



**Nestle**  
COFFEE

**NESCAFE CLASSIC  
COFFEE JAR ASSORTED**

6 x 200g

**593.61**

case

*98.94 each*



**NESCAFE CLASSIC  
BRAZIL COFFEE**

12 x 200g

**1187.23**

case

*98.94 each*



**NESCAFE CLASSIC  
POUCH**

12 x 230g

**1187.23**

case

*98.94 each*





**NESCAFE RICOFFY  
POUCH**

12 x 800g

**1358.00**

case

**113.17 each**



**NESCAFE RICOFFY  
COFFEE INSTANT**

12 x 750g

**1567.03**

case

**130.59 each**



**NESCAFE RICOFFY  
COFFEE INSTANT**

2 x 6 x 250g

**706.33**

case

**58.86 each**



**NESCAFE RICOFFY  
COFFEE ORIGINAL**

4 x 6 x 100g

**639.38**

case

**26.64 each**



**Nestlé**

**COFFEE ENHANCERS**

**NESTLE CREMORA  
CREAMER SACHET**

24 x 125g

**295.10**

case

**12.30 each**



# Nestlé

DAIRY



## NESPRAY MILK POWDER INSTANT

6 x 1.8Kg

**1833.44**

case

*305.57 each*

## NESPRAY MILK POWDER

16 x 400g

**978.20**

case

*61.14 each*



8 x 850g

**1008.26**

case

*126.03 each*



## KLIM MILK POWDER INSTANT SACHET

16 x 500g

**1255.08**

case

*78.44 each*

## NESTLE IDEAL EVAPORATED MILK REGULAR

4 x 6 x 380g

**589.25**

case

*24.55 each*



## NESTLE DESSERT CREAM

4 x 6 x 290g

**555.98**

case

*23.17 each*





**NESTLE CONDENSED MILK SWEETENED ASSORTED**

4 x 6 x 385g

**759.61**

case

*31.65 each*



**NESTLE CARAMEL TREAT**

4 x 6 x 360g

**825.18**

case

*34.38 each*



**DEAL No.: 35582**

**DATE: 25 MARCH - 11 MAY 2024**

**Nestlé**  
FOOD

**MAGGI LAZENBY WORCESTER SAUCE**

2 x 6 x 250ml

**250.01**

case

*20.83 each*



**MAGGI 2 MINUTE NOODLES ASSORTED**

12 x (5 x 68g)

**355.21**

case

*29.60 each*



# Nestlé

INFANT NUTRITION

**NESTUM STAGE 1, 2, 3 PROBIO CEREAL ASSORTED**

4 x 6 x 250g

**674.90**  
case

**28.12 each**



**CERELAC STAGE 1/2/3 & 4 ASSORTED**

4 x 6 x 250g

**991.86**  
case

**41.33 each**



# Noodle King

**INLAND. EASTERN CAPE & WESTERN CAPE ONLY.**

**EEZEE NOODLES WHOLESALE ASSORTED**

8 x (5 x 65g)

**119.92**  
case

**14.99 each**







**PROMASIDOR**

**RSA ONLY.  
MOQ: 15 CASES.**



**JABA STOCK SACHETS**

24 x 10 x 15g  
**314.51**  
case  
**1.31 each**

8 x 42 x 15g  
**314.51**  
case  
**0.94 each**

**JABBA SHAKER ASSORTED**

6 x 4 x 350g  
**487.94**  
case  
**20.33 each**



**RSA ONLY.**

**BULL BRAND CURRY MINCE**

6 x 400g  
**157.18**  
case  
**26.20 each**



**RHODES BEETROOT SLICED/ GRATED**

6 x 385g  
**108.39**  
case  
**18.06 each**



**RHODES JAM  
IN PLASTIC CUP  
ASSORTED**

12 x 290g  
**207.64**  
 case  
 17.30 each

**RHODES SQUISH INFANT  
FOOD ASSORTED**

12 x 110ml  
**130.79**  
 case  
 10.90 each



**RHODES CANNED  
PINEAPPLE PIECES/  
RINGS/ CRUSH**

12 x 440g  
**281.80**  
 case  
 23.48 each



**INFACARE JUICE  
ASSORTED**

4 x 6 x 200ml  
**242.69**  
 case  
 10.11 each



**LUCOZADE ORANGE  
PET**

24 x 360ml  
**303.20**  
 case  
 12.63 each



**MOQ: 36 CASES.**





**EXCLUDING  
NAMIBIA &  
BOTSWANA.**

**CHIPNIKS DIPPAS**

12 x 100g  
**180.68**  
case  
15.06 each



**SIMBA POPCORN  
ASSORTED**

16 x 90g  
**145.00**  
case  
9.06 each



**DORITOS CORN CHIPS  
ASSORTED**

12 x 240g  
**273.01**  
case  
22.75 each

**FRITOS ASSORTED**

24 x 120g  
**322.28**  
case  
13.43 each





Unilever  
Food  
Solutions

**RSA ONLY.**

**HELLMANN'S  
FRENCH DRESSING**

6 x 1Lt

**538.92**

case

**89.82 each**

**HELLMANN'S  
CREAMY RANCH  
DRESSING**

6 x 1Lt

**708.37**

case

**118.06 each**

**KNORR AROMAT  
SEASONING REGULAR**

6 x 1Kg

**742.86**

case

**123.81 each**



**ROBERTSONS RAJAH  
CURRY POWDER  
ASSORTED**

6 x 800g

**788.79**

case

**131.47 each**



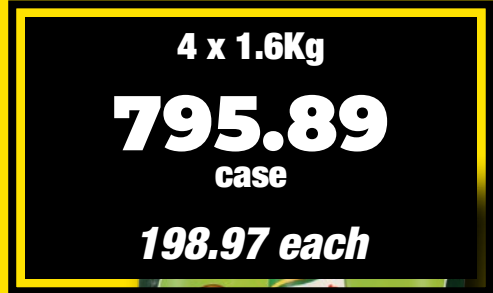
**KNORR SOUP  
ASSORTED**

4 x 1.6Kg

**795.89**

case

**198.97 each**



**ROBERTSONS SPICE  
ASSORTED**

6 x 1Kg

**789.47**

case

**131.58 each**







### SEA HARVEST HAKE MEDALLIONS

12 x 450g

**828.00**  
case

**69.00 each**



**RSA ONLY.**

### SEA HARVEST FISH FINGERS

2kg

**183.55**  
each

20 x 600g

**1158.00**  
case

**57.90 each**



### SEA HARVEST FISH CAKES

2kg

**164.55**  
each



20 x 300g

**660.00**  
case

**33.00 each**

### SEA HARVEST HAKE BABY HAKE

12 x 800g

**770.40**  
case

**64.20 each**





SIGNALO  
FOODS

**RSA & LESOTHO ONLY.**

**RAMA ORIGINAL 70%  
FAT SPREAD BRICK**

20 x 250g

**273.45**  
case

**13.67 each**

**RAMA 37% SPREAD  
FOR BREAD TUB**

12 x 1Kg

**503.35**  
case

**41.95 each**



**RAMA ORIGINAL 60%  
FAT SPREAD TUB**

24 x 500g

**772.31**  
case

**32.18 each**



**STORK 40% FAT  
SPREAD TUB**

24 x 500g

**631.68**  
case

**26.32 each**



**RONDO LITE 20% FAT  
SPREAD TUB**

16 x 1Kg

**405.49**  
case

**25.34 each**







**HAIR RANGE**

**RSA, NAMIBIA & BOTSWANA ONLY**

**PERFECT CHOICE AVOCADO OIL HAIR FOOD**

24 x 125g

**411.13**

case

**17.13 each**



**MPL BLACK CASTOR OIL**

2 x 6 x 100ml

**485.51**

case

**40.46 each**



**STA SOF FRO CURL MOISTURISING SPRAY**

2 x 6 x 250ml

**580.86**

case

**48.40 each**



**EASY WAVES AMLA OIL MOISTURISER**

2 x 6 x 250ml

**313.62**

case

**26.14 each**



**SOF 'N FREE BACK CASTOR OIL CURL MOISTURISING SPRAY**

2 x 6 x 350ml

**520.54**

case

**43.38 each**





SKINCARE

RSA ONLY.

CLERE PURE GLYCERINE

4 x 6 x 200ml

673.77

case

28.07 each



CLERE GLY-CO-OIL

12 x 6 x 100ml

1333.20

case

18.52 each



CLERE BP PETROLEUM JELLY ASSORTED

4 x 6 x 250ml

716.77

case

29.87 each



CLERE HAND & BODY LOTION ASSORTED

4 x 6 x 200ml

357.57

case

14.90 each







**SPECIALISED & HOME**

**RSA ONLY.**

**LEMON LITE COMPLEXION/  
VANISHING CREAM  
ASSORTED**

12 x 6 x 50ml

**1540.92**  
case

**21.40 each**



**LEMON LITE OIL  
CONTROL SKINCARE  
LOTION YELLOW**

12 x 6 x 125ml

**1216.35**  
case

**16.89 each**



**LEMON LITE FACE SOAP  
ASSORTED**

12 x 6 x 100ml

**1297.49**  
case

**18.02 each**



**KARVOL  
DECONGESTANT CHEST  
RUB**

4 x 6 x 50g

**1027.55**  
case

**42.81 each**



**KRAYONS  
PETROLEUM  
JELLY GENTLE  
FRAGRANCED**

4 x 6 x 475ml

**1027.55**  
case

*42.81 each*



**CHEMICO LIQUI CLEEN  
REFILL ASSORTED**

12 x 750ml

**236.67**  
case

*19.72 each*



**VIVA LAUNDRY BAR  
SOAP**

16 x 6 x 200g

**1568.78**  
case

*16.34 each*







**RSA ONLY.**



**DILINCT JUNIOR EXPECTORANT**

**6 x 100ml**  
**271.67**  
case  
**45.28 each**

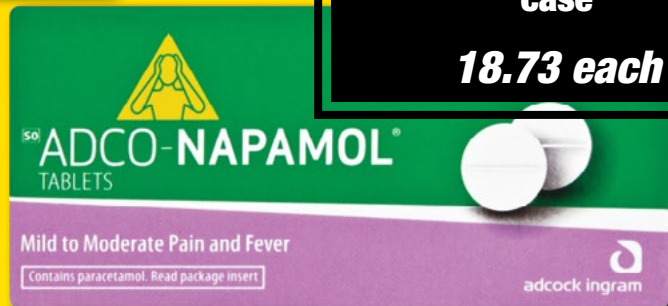
**EXPIGEN COUGH MIXTURE REGULAR**

**12 x 200ml**  
**1057.71**  
case  
**88.14 each**



**ADCO NAPAMOL PARACETAMOL ANALGESIC TABLETS**

**4 x 12 x 20's**  
**899.24**  
case  
**18.73 each**



**CITRO-SODA REGULAR**

**6 x 120g**  
**523.20**  
case  
**87.20 each**



**STEARNS COUGH SYRUP PEPPERMINT**

**8 x 6 x 100ml**  
**1599.84**  
case  
**33.33 each**

# Beiersdorf

**EXCLUDING NAMIBIA & BOTSWANA.**

**NIVEA MEN BODY CREAM/ LOTION ASSORTED**

6 x 400ml

**384.58**

case

**64.10 each**



**NIVEA BODY CREAM/ LOTION ASSORTED**

6 x 400ml

**375.03**

case

**62.50 each**



**BIC RAZOR 2 SENSITIVE 5+1**

20 x 1's

**475.12**

case

**23.76 each**



**BIC TWIN LADY POUCH 5 + 1**

20 x 6's

**549.80**

case

**27.49 each**



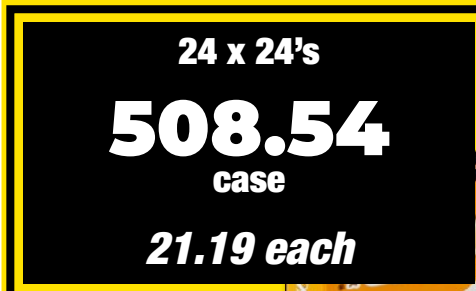
**BIC FIRELIGHTER 24'S**

24 x 24's

**508.54**

case

**21.19 each**







**RSA, LESOTHO,  
SWAZILAND, BOTSWANA  
& NAMIBIA.**

**MILLENNIUM BEE 3 PIECE  
PAINT BRUSH SET**

1's  
**33.64**  
each



**BUILDERS BUCKET  
ROUND**

1's  
**33.64**  
each



**ECOPILE 10 PIECE TRAY  
SET**

1's  
**67.27**  
each



**LOCKSET 3L CP  
JAGUAR SABS  
CLAM**

1's  
**75.12**  
each

**50MM BRASS JAGUAR  
CLAM PADLOCK**

1's

**97.55**  
each



**HANDLE CYL BR/P  
150MM VIC SCROLL  
JAGUAR BLIST**

1's

**100.91**  
each



**CASH BOX NO 1  
152X118X80**

1's

**123.34**  
each



**COMBINATION  
PADLOCK BR 4 DIAL**

1's

**125.58**  
each



**MILLENNIUM LEAF  
RAKE & BROOM  
COMBO + GUTT SWEEP**

1's

**74.00**  
each



**MOP BROOM & 9LT  
BUCKET**

1's

**80.73**  
each







**FLY REPELLER -  
METALLIC SILVER  
BATTERY /USB DIRECT  
OPERATED BATTERIES  
& CABLE INCLUDED**

**1's  
124.35  
each**

**USB RECHARGEABLE  
CLIP ON FAN - 3 SPEED**

**1's  
179.40  
each**

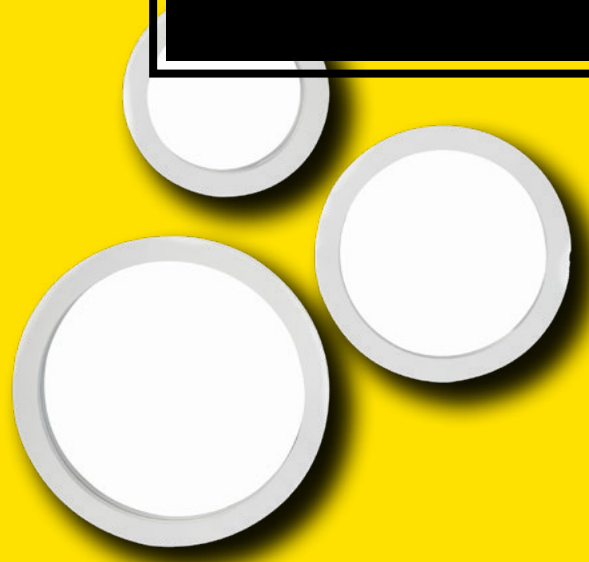


**3 PACK COB LED ROUND  
LIGHTS - WITH REMOTE  
CONTROL AND  
BATTERIES**

**1's  
162.58  
each**

**HOME QUIP WHITE  
BUBBLE MIRROR SET  
20X20/25X25/30X30CM**

**1's  
128.94  
each**



**USB RECHARGEABLE  
MOSQUITO KILLER  
WITH TORCH**

**1's  
222.01  
each**



**PADLOCK INS 70MM BR  
JAGUAR**



1's  
**224.25**  
each

**LADDER 4 STEP  
ALUMINIUM**

1's  
**807.30**  
each



**USB RECH TABLE  
TOP COOL BLAST  
FAN - BLACK**



1's  
**285.92**  
each



**NEWDEN**

BOARDMAN BROS (PTY) LTD

**RAINBOW  
DISHWASHING LIQUID -  
LEMON**

4 x 5 x 750ml  
**255.20**  
case  
**12.76 each**

**RAINBOW FOAM  
BATH ASSORTED**

6 x 1.50L  
**156.34**  
case  
**26.06 each**



4 x 5 x 400ml  
**183.93**  
case  
**9.20 each**



# DARSOTS & MORE CHEMICALS

**RSA ONLY.**

## NU LOOK POLISH ASSORTED

12 x 1Lt

**398.69**

case

**33.22 each**

## NU LOOK PINE GEL BUCKET ASSORTED

6 x 2Lt

**357.82**

case

**59.64 each**

## NU LOOK PINE GEL ASSORTED

24 x 500ml

**397.55**

case

**16.56 each**



# EVEREADY™

**RSA & BOTSWANA.**

## EVEREADY POWER PLUS AAA BATTERIES TRAY

12 x 24's

**1260.49**

case

**105.04 each**

## EVEREADY POWER PLUS BATTERIES R20PP

12 x 12's

**1934.15**

case

**161.18 each**



**EVEREADY PLATINUM BATTERIES LR6 BP10 STRIP PACK AA (SMALLER CASE)**

10 x 10's  
**955.63**  
 case  
*95.56 each*

**EVEREADY PLATINUM BATTERIES LR03 BP10 STRIP PACK AAA**

10 x 10's  
**955.63**  
 case  
*95.56 each*



**EVEREADY BATTERIES R6PP TRAY**

12 x 24's  
**1706.27**  
 case  
*142.19 each*

ZINC BATTERY  
**powerplus SILVER** 24 x R6PP / AA Batteries

**EVEREADY ALKALINE PLUS BATTERIES LR6 BP4**

20 x 4's  
**1128.36**  
 case  
*56.42 each*



**EVEREADY POWER PLUS AAA BP4**

24 x 4's  
**553.39**  
 case  
*23.06 each*



**EVEREADY PLATINUM BATTERIES LR03 BP4**

20 x 4's  
**1128.36**  
 case  
*56.42 each*





**EVEREADY POWER PLUS BATTERIES R20PP BP2 D**

5 x 20 x 2's

**3053.13**

case

*30.53 each*

**EVEREADY BATTERIES R6PP B4**

5 x 20 x 4's

**3053.01**

case

*30.53 each*



**HALEON**

**EXCLUDING NAMIBIA & BOTSWANA.**

**SENSODYNE TOOTHPASTE ASSORTED**

12 x 12 x 75ml

**6689.12**

case

*46.45 each*

**AQUAFRESH TOOTHPASTE ASSORTED**

12 x 12 x 100ml

**2584.89**

case

*17.95 each*



**DEAL No.: 35582**  
**DATE: 25 MARCH - 11 MAY 2024**





**KOTEX PANTYLINERS ASSORTED**

16 x 40's  
**366.38**  
case  
*22.90 each*



**HUGGIES BABY WIPES SIMPLY CLEAN**

10 x 72's  
**267.09**  
case  
*26.71 each*



**HUGGIES BABY WIPES ASSORTED**

10 x 56's  
**267.09**  
case  
*26.71 each*



**BABY SOFT TOILET PAPER WHITE 2 PLY**

6 x 9's  
**463.13**  
case  
*77.19 each*





# KT WASH

**EXCLUDING NAMIBIA & BOTSWANA.**



## SKY CORE HANDWASH WASHING POWDER

8 x 2Kg

**269.17**  
case

**33.65 each**

**MOQ: 960 CASES. HALF TRUCK DEAL ONLY. EXCLUDES R6250 (EXCL) NOT COSTED IN.**

8 x 2Kg

**250.81**  
case

**31.35 each**

**MOQ: 1920 CASES. FULL TRUCK DEAL ONLY. EXCLUDING R10000 (EXCL) NOT COSTED IN.**

## SKY AUTO WASHING POWDER

8 x 2Kg

**319.76**  
case

**39.97 each**

**MOQ: 960 CASES. HALF TRUCK DEAL ONLY. EXCLUDING R6250 (EXCL) NOT COSTED IN.**

8 x 2Kg

**297.96**  
case

**37.24 each**

**MOQ: 1920 CASES. FULL TRUCK DEAL ONLY. EXCLUDING R10000 (EXCL) NOT COSTED IN.**



**SKY AUTO LIQUID LAUNDRY BABY**

8 x 1.5L  
**333.10**  
 case  
**41.64 each**

**MOQ: 36 CASES.  
 EXCLUDING R10000  
 (EXCL) NOT COSTED IN.**



**SKY AUTO LIQUID LAUNDRY**

8 x 1.5L  
**337.65**  
 case  
**42.21 each**

**MOQ: 36 CASES.  
 EXCLUDING  
 R10000 (EXCL)  
 NOT COSTED IN.**



**RSA ONLY.**

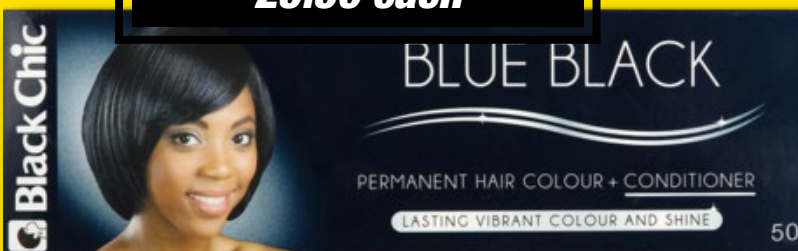
**HERCULES BEAUTY BUTTER**

12 x 12 x 20ml  
**1092.20**  
 case  
**7.58 each**



**BLACK CHIC HAIR COLOUR BLUE BLACK**

6 x 50ml  
**153.02**  
 case  
**25.50 each**



**HERCULES MIST ALBA ORIGINAL**

2 x 6 x 100g  
**155.53**  
 case  
**12.96 each**





**KAMILLEN  
BRILLIANTINE**

12 x 6 x 150ml

**1570.95**

case

**21.82 each**



**ISOPLUS-OIL SHEEN  
HAIR SPRAY AEROSOL**

12 x 240ml

**291.58**

case

**24.30 each**



**INGWE ITSHE  
ABELUNGU WHITE**

8 x 6 x 200g

**475.50**

case

**9.91 each**



**JUST FOR KIDS  
NORMAL HAIR  
RELAXER**

4 x 6 x 125ml

**365.96**

case

**15.25 each**



**BLACK CHIC  
ACTIVATOR BLUE GEL**

8 x 6 x 250ml

**602.09**

case

**12.54 each**



**CAIVIL SOFT & SHINY  
OIL MOISTURISER  
SPRAY**

4 x 6 x 250ml

**515.81**

case

**21.49 each**



**JUST 4 BABY BLUE  
AQUEOUS CREAM  
UNSCENTED + ROOIBOS**



8 x 6 x 250ml  
**764.92**  
case  
**15.94 each**



National Pride

**Cuddlers**

**RSA, LESOTHO &  
SWAZILAND.**

**CUDDLERS PANTS  
ASSORTED**



4 x 30's/ 32's/ 34's  
**537.37**  
case  
**134.34 each**

**CUDDLERS COMFORT  
VALUE PACK ASSORTED**



4 x 44's/ 48's/ 50's/ 52's  
**592.02**  
case  
**148.00 each**

**CUDDLERS BABY WIPES**



16 x 64's  
**309.67**  
case  
**19.35 each**

**CUDDLERS BABY  
WIPES SUPER  
VALUE PACK**



4 x 64's  
**296.01**  
case  
**74.00 each**



National Pride



RSA, LESOTHO & SWAZILAND.

BABY PANDA ACTIVE CARE LINEN SAVER 20'S

12 x 20's

1068.40

case

89.03 each

ADULT DIAPERS - MEDIUM

8 x 10's

902.87

case

112.86 each



BABY PANDA CLASSIC DIAPERS SIZE 3 MEDIUM

100's

169.05

each

ACTIVE CARE ADULT DIAPER PULL UP - MEDIUM/ LARGE/ XL

8 x 8's/ 9's/ 10's

966.90

case

120.86 each



BABY PANDA WET WIPES

24 x 72's

405.72

case

16.90 each





**RSA ONLY.**

**WOODS LOZENGES  
SINGLES PACK  
REGULAR**

18 x 45g

**1987.36**

case

**110.41 each**



**WOODS PEPPERMINT  
CURE ASSORTED**

6 x 100ml

**261.31**

case

**43.55 each**



**WOODS  
COUGH SYRUP  
ASSORTED**

6 x 50ml

**157.63**

case

**26.27 each**



**WOODS LOZENGES  
MULTI-PACK REGULAR**

6 x 45g

**132.55**

case

**22.09 each**

**WOODS G FORMULA**

6 x 100ml

**279.73**

case

**46.62 each**

6 x 50ml

**168.58**

case

**28.10 each**







**GLYCO LEMON SHAMPOO/  
CONDITIONER ASSORTED**

2 x 6 x 400ml  
**291.63**  
 case  
 24.30 each

**DEEP FREEZE SPRAY**

6 x 150ml  
**422.00**  
 case  
 70.33 each



**DEEP HEAT  
MENTHOLATUM TUBE  
RUB**

6 x 100g  
**551.13**  
 case  
 91.86 each



**DEEP HEAT  
MENTHOLATUM TUBE  
RUB**

6 x 75g  
**464.63**  
 case  
 77.44 each



**DEEP HEAT VAPOUR  
RUB VALUE PACK**

6 x 12 VAP  
**2706.24**  
 case  
 37.59 each

**ESKAMEL BAR SOAP ASSORTED**

6 x 75g  
**76.00**  
case

**12.67 each**



**ESKAMEL ACNE & PIMPLE OINTMENT**

6 x 20g  
**181.81**  
case

**30.30 each**



**RSA ONLY.**



**PREP TUBE**

12 x 6 x 100g  
**4647.04**  
case

**64.54 each**

**PREP JAR**

12 x 6 x 100g  
**4689.61**  
case

**65.13 each**

**LENNON GAL TABLETS**

10 x 12's  
**392.45**  
case

**39.24 each**



**LENNON DRUPPELS ASSORTED**

12 x 20ml  
**322.96**  
case

**26.91 each**



**LENNONS DOEPA**



12 x 10g  
**740.01**  
 case  
 61.67 each

**LENNONS DUIWELSDREK TINS**

12 x 10g  
**470.93**  
 case  
 39.24 each



**LAXADOR BISACODYL LAXATIVE TABLETS**

10 x 30's  
**292.18**  
 case  
 29.22 each



**LENNONS STERKSALF**

12 x 25g  
**740.02**  
 case  
 61.67 each



**LAXADOR BISACODYL LAXATIVE TABLETS**

6 x 10's  
**80.27**  
 case  
 13.38 each



**LENNONS LEWENSESSENS**

12 x 50ml  
**403.65**  
 case  
 33.64 each



6 x 100ml  
**269.10**  
 case  
 44.85 each

### EYE GENE EYE DROPS

12 x 10ml  
**589.81**  
case  
**49.15 each**



### EYE GENE EYE DROPS DROPS

12 x 5ml  
**387.69**  
case  
**32.31 each**



### ASHTON & PARSONS POWDERS

12 x 20's  
**432.17**  
case  
**36.01 each**



### LACSON PEDIATRIC LAXATIVE SYRUP

4 x 6 x 150ml  
**1224.28**  
case  
**51.01 each**



### LENNON COUGH MIXTURE ASSORTED

6 x 100ml  
**247.49**  
case  
**41.25 each**

6 x 50ml  
**161.32**  
case  
**26.89 each**





**BORSTOL COUGH  
REMEDY REGULAR**

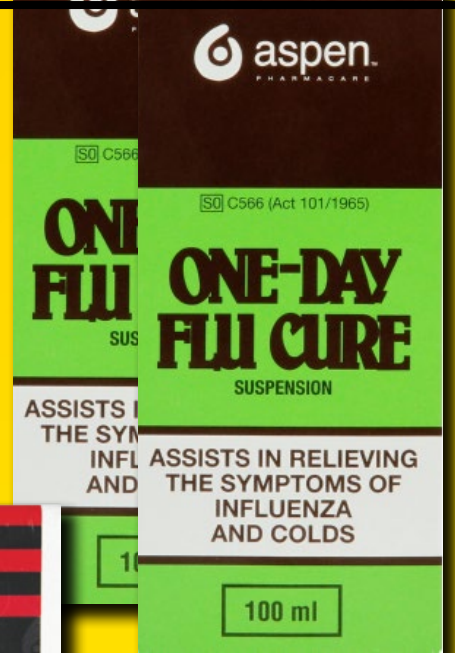


6 x 100ml  
**280.03**  
case  
*46.67 each*

6 x 50ml  
**158.23**  
case  
*26.37 each*

**ONE DAY FLU CURE**

6 x 100ml  
**325.66**  
case  
*54.28 each*



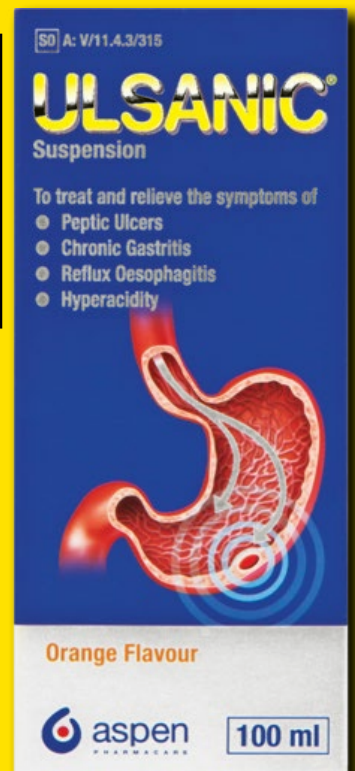
**BROOKLAX  
CHOCOLATE**

12 x 4's  
**300.89**  
case  
*25.07 each*



**ULSANIC SUSPENSION**

6 x 100ml  
**720.74**  
case  
*120.12 each*



**HAMBURG TEA**

6 x 25g  
**197.63**  
case  
*32.94 each*

**PUMA COUGH SYRUP**

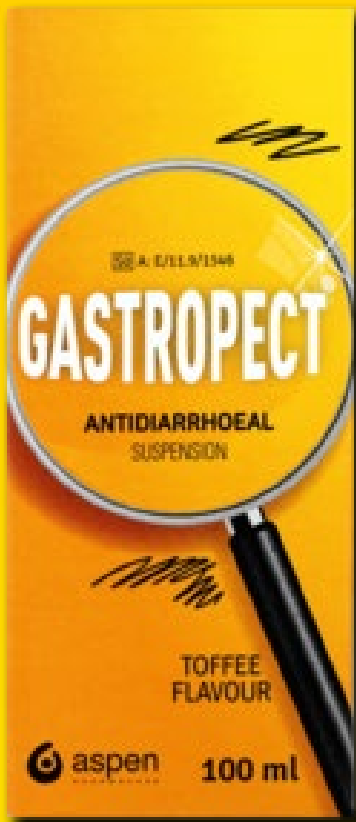
6 x 100ml  
**253.55**  
 case  
 42.26 each

6 x 50ml  
**146.22**  
 case  
 24.37 each



**PUMA BALM JAR**

6 x 50g  
**253.55**  
 case  
 42.26 each

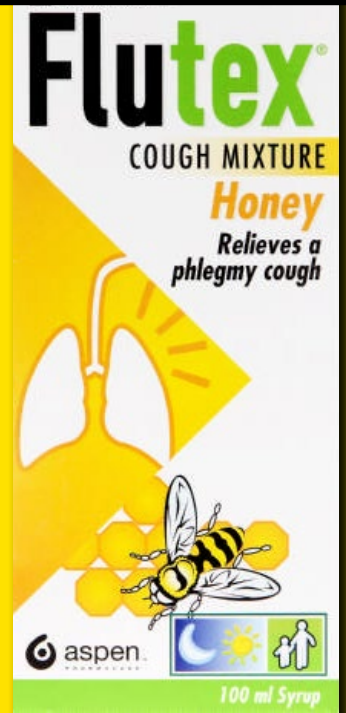


**GASTROPECT DIARRHOEA SUSPENSION**

4 x 6 x 100ml  
**804.31**  
 case  
 33.51 each

**FLUTEX COUGH MIXTURE ORANGE**

4 x 6 x 100ml  
**1273.37**  
 case  
 53.06 each



**GERMOLENE OINTMENT**

12 x 20g  
**515.47**  
 case  
 42.96 each

6 x 50g  
**496.85**  
 case  
 82.81 each







**RSA & LESOTHO ONLY.**



**STREPSILS  
LOZENGES  
ORANGE C**

**12 x 25 x 2's**

**842.35**  
case

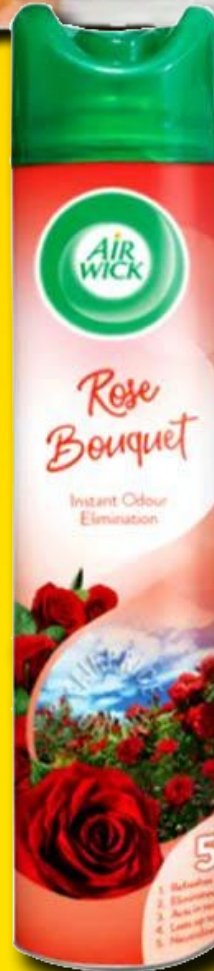
**2.81 each**

**MORTEIN ULTRA  
ODOURLESS**

**4 x 6 x 180ml**

**474.99**  
case

**19.79 each**



**AIRWICK AIR  
FRESHENER 5-IN-1  
ASSORTED**

**2 x 6 x 280ml**

**242.13**  
case

**20.18 each**



**JIK BLEACH LIQUID  
ASSORTED**

**2 x 6 x 500ml**

**159.01**  
case

**13.25 each**

**MR MIN WOOD/  
MULTI SURFACE  
ASSORTED**

**6 x 6 x 300ml**

**1085.63**  
case

**30.16 each**



**DETTOL ANTISEPTIC ASSORTED**

2 x 6 x 125ml

**306.11**

case

*25.51 each*

4 x 12 x 50ml

**532.13**

case

*11.09 each*



**RSA ONLY.**

**MR SHEEN TILE CLEANER ASSORTED**

12 x 1L

**291.04**

case

*24.25 each*



**SHIELD ANTI FREEZE**

12 x 1L

**297.53**

case

*24.79 each*



**SHIELD TRIPLE PACK AIR SCENTS MIXED**

12 x 200ml

**533.18**

case

*44.43 each*





**MR SHEEN OVEN  
CLEANER - HEAVY  
DUTY**



**12 x 300ml**  
**444.94**  
case  
**37.08 each**

**MR SHEEN  
DISHWASHING LIQUID  
REFILL**

**12 x 750ml**  
**208.02**  
case  
**17.34 each**

**MR SHEEN  
DISHWASHING LIQUID**

**12 x 750ml**  
**246.14**  
case  
**20.51 each**



**AIR SCENTS EXTRA  
VALUE ASSORTED**

**6 x 300ml**  
**114.99**  
case  
**19.16 each**



**SHIELD INTERIOR  
SHEEN XTREME  
ASSORTED**

**12 x 750ml**  
**743.82**  
case  
**61.98 each**

**MR SHEEN PINE GEL TUB**

**6 x 1LT**  
**162.29**  
case  
**27.05 each**



**6 x 500ml**  
**87.31**  
case  
**14.55 each**





**RSA ONLY.**

**TWNSAVER  
KITCHEN ROLLER  
TOWEL WHITE**

12 x 2's  
**261.24**  
 case  
 21.77 each



**TWNSAVER KITCHEN  
ROLLER TOWEL  
MIGHTY BIG**

12 x 1's  
**319.04**  
 case  
 26.59 each

6 x 2's  
**296.94**  
 case  
 49.49 each



**TWNSAVER 2PLY  
TOILET PAPER**

24's  
**236.46**  
 case  
 236.46 each

**TWNSAVER 2PLY  
LUXURY TOILET PAPER  
WHITE**

8 x 9's  
**568.42**  
 case  
 71.05 each





Our 100th Year as a South African Manufacturer

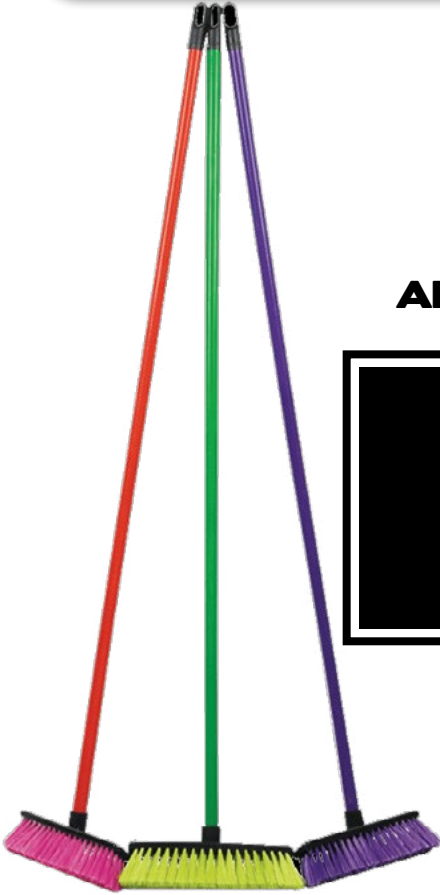
### ADDIS WIRE SCOURERS 3

1's  
**14.50**  
each



### ADDIS EVERYDAY BROOM

1's  
**27.33**  
each



### ADDIS GARDEN RAKE

1's  
**21.19**  
each



### ADDIS ECONOMY TOILET BRUSH SET

1's  
**25.10**  
each



### ADDIS BUDGET BUCKET 9LT

1's  
**22.25**  
each



### ADDIS BUILDERS BUCKET

1's  
**40.16**  
each



**ADDIS RAINBOW  
SPONGE SCOURER  
10 PACK**

1's  
**36.81**  
each



**ADDIS WATERING CAN  
5LT REGRIND**

1's  
**46.85**  
each



**ADDIS JUMBO WET  
MOP + HANDLE**

1's  
**52.65**  
each



**ADDIS GEM FEATHER  
DUSTER**

1's  
**59.12**  
each



**ADDIS MAXI MOP**

1's  
**110.43**  
each



**ADDIS MUCK BUCKET  
45LT ROPE**

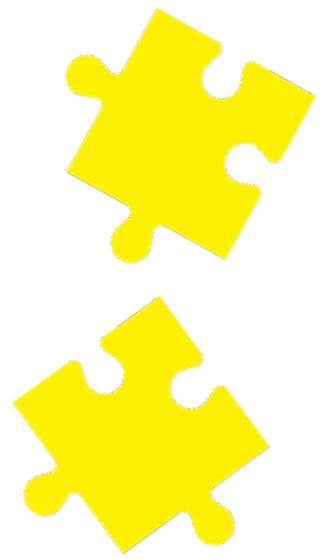
1's  
**63.58**  
each





**ADDIS CLIP & SEAL 1.2LT  
RECTANGULAR**

1's  
**9.81**  
each



**ADDIS CLIP & SEAL  
2.8LT RECTANGULAR**

1's  
**54.66**  
each



**ADDIS PLATFORM  
BROOM 24" PVC  
ASSORTED**

1's  
**110.43**  
each



**ADDIS LAUNDRY  
BASKET**

1's  
**44.62**  
each



**ADDIS CLEAR STORAGE  
BOX 28LT**

1's  
**128.28**  
each



**ADDIS GARDEN  
SECURILOCK SET**

1's

**167.32**  
each



**ADDIS SLIM LINE 3  
DRAWER**

1's

**206.37**  
each



**ADDIS FUEL JERRY CAN  
10LT**

1's

**245.41**  
each



**ADDIS CARGO 89LT  
TRUNK**

1's

**333.53**  
each



**ADDIS PRO CLEAN  
STIFF / SOFT**

3 x 30cm

**73.62**  
each





VERIGREEN™

**RSA ONLY.**

**SUPA MAMA CLINGWRAP 30M**

12 x 30M

**314.19**  
case

**26.18 each**



**SUPA MAMA BAKING PAPER**

12 x 5M

**308.74**  
case

**25.73 each**



**SUPA MAMA HEAVY DUTY FOIL 5M**

12 x 5M

**378.93**  
case

**31.58 each**



**SUPA MAMA VALUE BIN LINERS DRAW STRING**

20 x 25's

**785.04**  
case

**39.25 each**



**SUPA MAMA LARGE FREEZER BAGS**

12 x Large

**396.21**  
case

**33.02 each**



**VALUE REFUSE BAGS 10'S**

25 x 10's

**440.17**  
case

**17.61 each**



**YARDLEY**  
L O N D O N

**RSA & LESOTHO ONLY.**

**GRAVITY/ EAST WEST  
MALE DEODORANT  
ASSORTED**

6 x 120ml

**186.78**  
case

**31.13 each**



**YARDLEY/ LENTHERIC  
BODY SPRAY  
ASSORTED**

6 x 90ml

**228.29**  
case

**38.05 each**

**YARDLEY BODY  
SPRAY ASSORTED**

6 x 125ml

**228.29**  
case

**38.05 each**



**EXCLAMATION  
PERFUME BODY SPRAY  
ASSORTED**

6 x 90ml

**186.78**  
case

**31.13 each**



UMS NORTHERN DIVISION  
+27 11 370 7200

UMS SOUTHERN DIVISION  
+27 21 552 8354

UMS COASTAL DIVISION  
+27 31 764 8340

UMS EASTERN CAPE DIVISION  
+27 10 492 3922



All prices include VAT, swell allowances and settlement discounts. All prices exclude bulk allowances and truck allowances. Please ensure that all orders are placed via UMS in order to receive tallies. Please ensure all orders are placed on time, as suppliers will not accept orders placed outside the deal date.

E&OE



BIGGER SAVINGS. BETTER LIVING