



DEAL No.: 35585

DEAL DATE: 02 - 31 MAY 2024



BIGGER SAVINGS, BETTER LIVING

OUR VISION

to stand alone in our **QUALITY**
to be set apart in our **EXCELLENCE**
to be superior in our **SERVICE**

OUR MISSION

we are a company
DEDICATED
to the task of
“**BUILDING BETTER
BUSINESSES**”

OUR VALUES

	gratitude	discipline
excellence	partnership	innovation
respect	integrity	
honour	empathy	
diligence	humility	

POWERFUL PARTNERSHIPS • BUILDING BETTER BUSINESSES



INDEX

Afriq Pet Food	4	Joya Brands	30
Aldor	4	Kellogg's	31
All Joy	5	Kellogg's: Toloram	32
Astral: Goldi Chicken	5	Lipton	32
Astral: County Fair	7	Lucky Star	33
Botselo Mills	7	Martin and Martin	34
Cerebos	8	Miami Cannery	35
Chill Beverages	9	National Brands	35
Chipkins Puratos	9	National Brands: Biscuits	39
Clover: Epic	11	National Brands: Willards	39
Clover: Eskort	12	Nestle: Dairy	40
Clover: Juices	14	Nestle: Food	41
Clover: Other	15	Nestle: Infant Nutrition	41
Clover: Powders and UHT	16	Pioneer Foods: Ceres	42
Coca-Cola	17	Pioneer Foods: Essential	43
Crown National	19	Pioneer Foods: Groceries	44
Dairy Group SA	20	Premier	45
Dairymaid	20	Premier: Beverages	47
Danone	21	Promasidor	48
Diplomat: Glenryck	22	Retailer Brands	49
Diplomat: Mondelez	22	RFG	49
Dynamic Brands	24	RFG: Beverages	50
Dynamic Brands: Dairy	24	RFG: Pakco	50
Dursots	25	Rieses Food Imports	51
Ekhamanzi Springs: Aquelle	25	SGX Sales: Nandos	51
Famous Brands	26	Sime Darby Oils	52
Hasty Tasty	26	South Bakels	53
Illovo Sugar	27	Spice Mecca	54
International Food Group	27	Thokoman	54
Joekels	29		



Tiger Brands: Beverages	55
Tiger Brands: Culinary	55
Tiger Brands: Fattis and Monis	56
Tiger Brands: King Foods	57
Tiger Brands: Purity	57
Tiger Brands: Snacks & Treats	58
Trumps	60
Twizza	61
Vector: Cape Oil and Margarine	63
Vector: Famous Brands	64
Vector: I & J	64
Vector: Lancewood	65
Vector: McCain	66
Vector: RFG Today	67
Vector: Sea Harvest	68
Vector: Siquo Foods	69
Woodlands Dairy	71

Non Foods Index	73
------------------------	-----------

CELEBRATE
WITH US
WITH THESE GREAT
SAVINGS





**RSA ONLY. EXCLUDING
BOTSWANA, LESOTHO,
SWAZILAND & NAMIBIA.**



**EPOL ADULT CAT FOOD
1.8KG + 200G FREE
ASSORTED**

9 x 2Kg
537.56
case
59.73 each



**VITAGEN DRY DOG FOOD
ASSORTED**

8Kg
159.71
each



**EPOL ADULT DRY DOG
FOOD ASSORTED**

8Kg
139.96
each



**EXCLUDING NAMIBIA &
BOTSWANA. EXCLUDES
1.5% BULK ON FULL
LOADS. MOQ: 1890 CASES.
TRUCK DEAL ONLY.
FREE STOCK COSTED INTO
PRICE.**



**PIN POP/ YOGUETA
LOLLIPOPS ASSORTED**

16 x 48's
691.91
case
43.24 each



**RSA ONLY. EXCLUDING
BOTSWANA, LESOTHO,
SWAZILAND & NAMIBIA.**

**ALL JOY VERI PERI
ASSORTED**

12 x 250ml

379.70
case

31.64 each



**ALL JOY VERI PERI
ASSORTED**

12 x 125ml

222.27
case

18.52 each



ALL JOY TOMATO SAUCE

6 x 2Ll

286.93
case

47.82 each



**ALL JOY TOMATO
SAUCE**

6 x 750ml

143.76
case

23.96 each



**Astral
GOLDI CHICKEN**

**RSA ONLY. EXCLUDING
BOTSWANA, LESOTHO,
SWAZILAND & NAMIBIA.
ADDITIONAL R2.5K ON
TRUCK ALLOWANCE FOR
14 PALLET ORDERS.
ADDITIONAL R5K ON TRUCK
ALLOWANCE FOR 26
PALLET ORDERS.**

**GOLDI FROZEN
JUMBO POPS**

3 x 1Kg

205.27
case

68.42 each

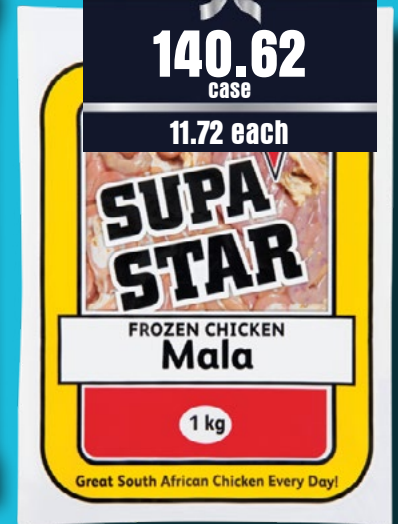


**GOLDI SUPA STAR FROZEN
CHICKEN MALA**

12 x 1Kg

140.62
case

11.72 each



**GOLDI FRESH CHICKEN
POLONY**

10 x 1Kg

553.15
case

55.31 each



**GOLDI FROZEN VALUE
PACK**

8 x 800g

291.61
case

36.45 each





GOLDI IQF THIGHS

4 x 3.5Kg

610.51
case

152.63 each



GOLDI FROZEN NUGGETS

3 x 1Kg

225.80
case

75.27 each

NEW!



GOLDI IQF MIXED PORTIONS

6 x 2Kg

515.57
case

85.93 each



GOLDI IQF DRUMSTICKS

4 x 3.5Kg

747.20
case

186.80 each

GOLDI IQF CHICKEN MIXED PORTIONS

4 x 3Kg

515.57
case

128.89 each



GOLDI IQF WINGS

4 x 3.5Kg

909.65
case

227.41 each



GOLDI IQF MIXED PORTIONS

3 x 5Kg

644.46
case

214.82 each

GOLDI FROZEN HEAD & FEET

10 x 1Kg

97.64
case

9.76 each





EXCLUDING NAMIBIA & BOTSWANA.

TOPNOTCH FROZEN CHICKEN NECKS

10 x 1Kg

230.00
case

23.00 each

25 x 400g

230.00
case

9.20 each

COUNTY FAIR FROZEN GIZZARDS

25 x 400g

345.00
case

13.80 each

10 x 1kg

345.00
case

34.50 each



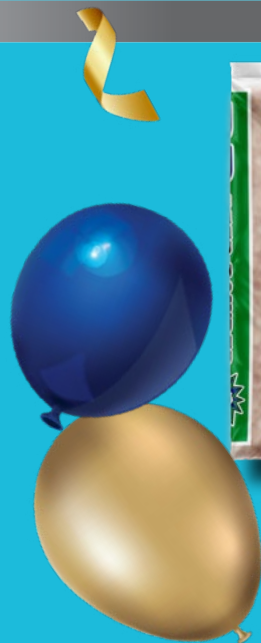
JABULANI BEER/ BB POWDER

20 x 750g

396.00
case

19.80 each

NORTH WEST, GAUTENG, NORTHERN CAPE, LIMPOPO, MPUMALANGA & EASTERN CAPE ONLY.



SUPER WHITE INSTANT PORRIDGE ASSORTED

10 x 1Kg

280.00
case

28.00 each

RSA ONLY. EXCLUDING BOTSWANA, LESOTHO, SWAZILAND & NAMIBIA.





NATIONS PRIDE YELLOW MAIZE MEAL

12.5kg
142.90
each

**EASTERN CAPE
ONLY.**



SUPER WHITE SUPER MAIZE MEAL

12.5kg
141.00
each

10kg
113.00
each

**NORTH WEST,
GAUTENG, NORTHERN
CAPE, LIMPOPO,
MPUMALANGA &
EASTERN CAPE ONLY.**

Cerebos

**NATIONAL - ALL STORES.
DEAL AVAILABLE FROM
06/05/2024 - 31/05/2024.**



CEREBOS SEA SALT GREEN/ BLUE POLY

40 x 500g
318.97
case
7.97 each

DRAW AS REQUIRED.

**THIS ORDER CAN ONLY BE PLACED UNDER DEAL NUMBER: 36490
NATIONAL - ALL STORES.**



CEREBOS SEA SALT GREEN/ BLUE POLY

40 x 500g
278.61
case
6.97 each

**ADDITIONAL 2% BULK FOR
TRUCK LOAD.
MOQ: 1536 CASES.**



**EXCLUDING BOTSWANA,
LESOTHO, SWAZILAND &
NAMIBIA.**

SCORE ENERGY DRINK ASSORTED

4 x 6 x 500ml

188.74
case

7.86 each

**MOQ: 33 PALLETS =
2640 CASES.**



**EXCLUDING NAMIBIA &
BOTSWANA.**



CHIPKINS PRINCESS CAKE MIX

12.5Kg

447.19
each

TEGRAL SATIN GOLDEN MOIST

12.5Kg

608.57
each



CHIPKINS CUSTARD INSTANT

10Kg

940.08
each



TEGERAL SATIN CREAM CAKE

12.5Kg

552.87
each



CHIPKINS PRE-MIX ASSORTED



25Kg
542.07
 each

CHIPKINS JHB BUTTER FLAVOURED MADEIRA



12.5Kg
584.06
 each

CHIPKINS INSTANT MILK TART



5Kg
528.36
 each

CHIPKINS MARGARINE YELLOW/ WHITE



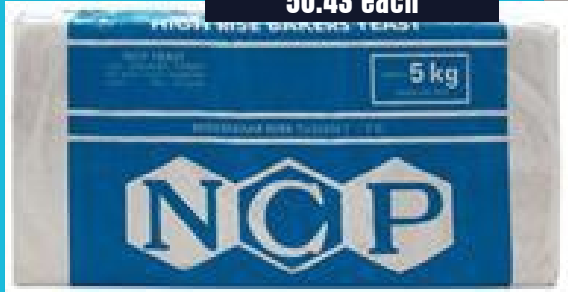
25Kg
910.57
 each

CHIPKINS TEGRAL MOIST CHOCOLATE CAKE



12.5Kg
658.83
 each

NCP YEAST IDY BRICKS



20 x 500g
1008.56
 case
 50.43 each

CHIPKINS CHIPLITE



25Ll
447.44
 each



EPIC

**RSA ONLY. EXCLUDING
BOTSWANA, LESOTHO,
SWAZILAND & NAMIBIA.**



**OLE LOW FAT SPREAD
BRICK**

30 x 500g
296.70
case
9.89 each

**BLOSSOM MEDIUM FAT
SPREAD LITE TUB**

12 x 1Kg
355.80
case
29.65 each



**OLE LOW FAT
SPREAD TUB**

12 x 1Kg
308.35
case
25.70 each

**EPIC ORIGINAL
MAYONNAISE**

12 x 750g
213.26
case
17.77 each





ESKORT

**RSA ONLY. EXCLUDING
BOTSWANA, LESOTHO,
SWAZILAND & NAMIBIA.**

ESKORT CHICKEN POLONY

4 x 2.5Kg
542.80
 case
 135.70 each

10 x 750g
437.00
 case
 43.70 each



ESKORT FRENCH POLONY

4 x 2Kg
312.80
 case
 78.20 each

4 x 2.5Kg
395.60
 case
 98.90 each

6 x 1Kg
248.40
 case
 41.40 each

12 x 500g
261.92
 case
 21.83 each

10 x 750g
299.00
 case
 29.90 each

24 x 250g
380.05
 case
 15.84 each



CHAMPION FRENCH POLONY

4 x 2Kg
276.00
 case
 69.00 each

10 x 750g
264.50
 case
 26.45 each



ESKORT CHOPPED HAM ROLL

12 x 500g
552.00
 case
 46.00 each



ESKORT GARLIC POLONY

6 x 1Kg
248.40
 case
 41.40 each



ESKORT ROUND CUT/ DICED BACON



25 x 200g
747.50
 case
29.90 each

ESKORT BACON CUTTS



5 x 1Kg
623.88
 case
124.78 each

ESKORT STREAKY BACON

25 x 200g
1000.50
 case
40.02 each



25 x 200g
790.62
 case
31.62 each

ESKORT SHOULDER BACON

ESKORT CHICKEN VIENNAS

6 x 1Kg
296.70
 case
49.45 each



ESKORT RED PALE/ SMOKED VIENNAS

12 x 500g
400.20
 case
33.35 each



CELEBRATE 2024

**ESKORT RED PALE/
SMOKED VIENNAS**

6 x 1Kg
410.55
 case
 68.42 each



**ESKORT CHEESE
RUSSIANS**

12 x 500g
717.60
 case
 59.80 each



ESKORT RUSSIANS

4 x 2Kg
869.40
 case
 217.35 each

12 x 500g
662.40
 case
 55.20 each



JUICES

**RSA ONLY. EXCLUDING
BOTSWANA, LESOTHO,
SWAZILAND & NAMIBIA.**

KRUSH UHT ASSORTED

6 x 1l
102.02
 case
 17.00 each



**TROPIKA EAZY
ASSORTED**

6 x 1l
90.02
 case
 15.00 each





OTHER

**RSA ONLY. EXCLUDING
BOTSWANA, LESOTHO,
SWAZILAND & NAMIBIA.**

**CLOVER CLASSIC
VANILLA CUSTARD**

6 x 1Lt
143.95
case
23.99 each



**CLOVER FRUITS
OF THE FOREST
YOGHURT**

6 x 1Kg
201.38
case
33.55 each



**CLOVER BLISS DOUBLE
CREAM YOGHURT
ASSORTED**

6 x 1Kg
232.67
case
38.78 each



**CLOVER DOUBLE CREAM
PLAIN YOGHURT**

6 x 1Kg
201.38
case
33.56 each

**CLOVER LOW FAT PLAIN
YOGHURT**

6 x 1Kg
201.38
case
33.56 each



**CLOVER CLASSIC YOGHURT
ASSORTED**

8 x (6 x 100g)
135.90
case
16.99 each



CLOVER CHEESE IWS ASSORTED

8 x 810g

726.22

case

90.78 each



CLOVER SWEETENED FULL CREAM CONDENSED MILK

4 x 6 x 385g

626.58

case

26.11 each



POWDERS & UHT

RSA ONLY. EXCLUDING BOTSWANA, LESOTHO, SWAZILAND & NAMIBIA.

CLOVER CREAMEL CREAMER

20 x 750g

738.07

case

36.90 each





**RSA ONLY. EXCLUDING
WESTERN CAPE,
BOTSWANA, LESOTHO,
SWAZILAND & NAMIBIA.
BUY IN ONLY 05/05/2024 -
25/05/2024.
LAST DELIVERY
26/05/2024**

**STONEY GINGER BEER/
FANTA/ SPRITE PET BOTTLE
ASSORTED**

6 x 2Ll
118.78
CASE
19.80 each



**TWIST PET BOTTLE
ASSORTED**

6 x 2Ll
94.78
CASE
15.80 each



**SPARLETTA PET
BOTTLE ASSORTED**

6 x 2Ll
96.54
CASE
16.09 each



COKE PET BOTTLE

6 x 2Ll
139.10
CASE
23.18 each



**COCA COLA SOFT
DRINK**

12 x 1.5Ll
211.48
CASE
17.62 each

**FANTA ORANGE/
SPRITE/ STONEY/
TWIST ASSORTED**

12 x 1.5Ll
171.03
CASE
14.25 each



**FANTA/ SPRITE/
STONEY/COKE/ COKE
ZERO PET BOTTLE**

24 x 300ml

167.54
case

6.98 each



**SPRITE/ STONEY PET
BOTTLE**

4 x 6 x 300ml

167.54
case

6.98 each

**COCA COLA/ FANTA/
SPRITE/ TWIST/
SCHWEPES/
SPARLETTA CAN
ASSORTED**

4 x 6 x 300ml

236.65
case

9.86 each



**BONAQUA PUMP
FLAVOURED STILL WATER
ASSORTED PET**

4 x 6 x 750ml

264.44
case

11.02 each



**BONAQUA PREMIUM
STILL WATER**

4 x 6 x 750ml

262.66
case

10.94 each

**POWERADE/ POWERADE
ZERO SPORTS DRINK
ASSORTED**

4 x 6 x 500ml

279.72
case

11.66 each



**MONSTER/ MONSTER ZERO
ENERGY DRINK ASSORTED**

6 x 4 x 500ml

341.87
case

14.24 each





RSA & LESOTHO ONLY.



CROWN BBQ SIX GUN GRILL

10 x 1kg

784.46
case

78.45 each

CROWN BBQ SIX GUN GRILL SEASONING

25 x 200g

473.90
case

18.96 each

FROM 1 CASE.

25 x 200g

461.62
case

18.46 each

ORDER 1 PALLET TO QUALIFY FOR THE DEAL.
MOQ: 160 CASES.

25 x 200g

434.61
case

17.38 each

ORDER 5 PALLET TO QUALIFY FOR THE DEAL.
MOQ: 800 CASES.

25 x 200g

424.79
case

16.99 each

ORDER 10 PALLET TO QUALIFY FOR THE DEAL.
MOQ: 1600 CASES.



JIMMY'S STEAKHOUSE SAUCE

12 x 750ml

477.50
case

39.79 each



CROWN CHICKEN SPICE SEASONING

25 x 200g

347.90
case

13.92 each



CROWN BRAAI SPICE SEASONING

25 x 200g

409.02
case

16.36 each



DAIRY GROUP SA



**RSA ONLY. EXCLUDING
BOTSWANA, LESOTHO,
SWAZILAND & NAMIBIA.**



**CREAMLINE UHT MEDIUM
FAT DAIRY BLEND**

6 x 1Ll
68.31
 case
 11.39 each

**CREAMLINE FULL
CREAM MILK**



6 x 1Ll
87.99
 case
 14.67 each

CREAMLINE BUTTER



30 x 500g
1639.44
 case
 54.65 each



NATIONAL - ALL STORES.

**FARMHOUSE ICE CREAM
ASSORTED**

6 x 2Ll
255.92
 case
 42.65 each



**COUNTRY FRESH
ASSORTED**

6 x 1.8Ll
303.39
 case
 50.57 each



**RSA ONLY. EXCLUDING
BOTSWANA, LESOTHO,
SWAZILAND & NAMIBIA.**

**DANONE ULTRA MEL
CUSTARD ASSORTED**

10 x 1Ll
241.10 case
24.11 each
10 x 500g
171.03 case
17.10 each



**DANONE YOGI SIP
DRINKING YOGHURT
ASSORTED**

10 x 250g
94.02 case
9.40 each



**DANONE DANUP 2 IN
1 ASSORTED**

8 x 950g
149.72 case
18.72 each



**NUTRIDAY FRUIT DAIRY
SNACK ASSORTED**

6 x 900g
162.09 case
27.02 each



**NUTRIDAY LONG LIFE
LOW FAT DAIRY SNACK
ASSORTED**

12 x 100g
38.86 case
3.24 each



DIPLOMAT
SOUTH AFRICA

GLENRYCK
SINCE 1937

EXCLUDING NAMIBIA &
BOTSWANA. ALL ORDERS TO
BE SENT TO:
Tejal.R@diplomat-global.com

**GLENRYCK PILCHARDS
IN SIX GUN SAUCE**

12 x 400g

246.99
case

20.58 each



**GLENRYCK
PILCHARDS
ASSORTED**

12 x 400g

246.99
case

20.58 each

DIPLOMAT
SOUTH AFRICA

Mondelēz
International

EXCLUDING NAMIBIA &
BOTSWANA. ALL ORDERS TO
BE SENT TO:
Tejal.R@diplomat-global.com

**ROYAL BAKING
POWDER REFILL**

24 x 500g

1087.10
case

45.30 each

24 x 200g

599.76
case

24.19 each



ROYAL BAKING POWDER

26 x 50g

224.99
case

8.65 each



CLORETS MINT 2 PIECE ASSORTED

40 x 162.4g

1176.43
case

29.41 each



CADBURY CHOCOLATE LARGE BARS ASSORTED

40 x 40g/ 48g

409.99
case

10.25 each



CADBURY 5 STAR CHOCOLATE

32 x 48.5g

327.92
case

10.25 each



STIMOROL CHEWING GUM SUGAR FREE 2 PIECE ASSORTED

30 x 140g

1285.32
case

42.84 each



OREO BISCUITS ASSORTED

20 x 128.8g

269.89
case

13.49 each



TUC CRACKER BISCUIT ASSORTED

24 x 100g

354.10
case

14.75 each



CELEBRATE



**RSA ONLY. EXCLUDING
BOTSWANA, LESOTHO,
SWAZILAND & NAMIBIA.**

**BURTONS CORDIAL
ASSORTED**

6 x 1Ll
222.81
 case
 37.13 each



**SLIMSY READY-TO-DRINK
SPORT DRINK ASSORTED**

6 x 500ml
100.89
 case
 16.81 each

**SLIMSY ZERO READY-
TO-DRINK SPORT DRINK
ASSORTED**

12 x 500ml
100.89
 case
 8.41 each

**BURTONS MIX
ASSORTED**

6 x 1Ll
85.13
 case
 14.19 each



**RASCALS SPORT
DRINK ASSORTED**

6 x 300ml
26.06
 case
 4.34 each



DAIRY
**RSA ONLY. EXCLUDING
BOTSWANA, LESOTHO,
SWAZILAND & NAMIBIA.**

**RASCALS FLAVOURED
MILK ASSORTED**

6 x 350ml
57.90
 case
 9.65 each

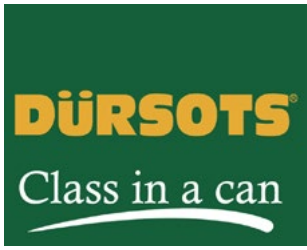


**DAIRY BURST FLAVOURED
MILK ASSORTED**

6 x 350ml
57.90
 case
 9.65 each



EASTERN TRADING COMPANY



EXCLUDING NAMIBIA & BOTSWANA.

DURSOTS BEANS IN TOMATO SAUCE

12 x 410g
117.07
 case
 9.76 each



DURSOTS SPAGHETTI IN TOMATO SAUCE

12 x 410g
140.58
 case
 11.71 each



DURSOTS CHAKALAKA ASSORTED

12 x 410g
159.37
 case
 13.28 each



DURSOTS TOMATO & ONION MIX

12 x 410g
152.26
 case
 12.69 each



EKHAMANZI SPRINGS



**EXCLUDING NAMIBIA & BOTSWANA.
 EXCLUDING 4% TRUCK.**

AQUELLE STILL/ SPARKLING MINERAL WATER

6 x 500ml
30.87
 case
 5.15 each



AQUELLE SPARKLING FLAVOURED WATER ASSORTED

6 x 500ml
40.75
 case
 6.79 each





famous | brands

EXCLUDING NAMIBIA & BOTSWANA.

STEERS DRESSING ASSORTED

12 x 375ml
313.34
case
26.11 each



STEERS CREAMY PERI PERI SAUCE

12 x 375ml
313.34
case
26.11 each



MUGG & BEAN SAUCE ASSORTED

6 x 250ml
167.88
case
27.98 each



STEERS SAUCE ASSORTED

12 x 375ml
313.34
case
26.11 each



HASTY TASTY

EXCLUDING NAMIBIA & BOTSWANA.

HASTY TASTY SWEET & SOUR PINEAPPLE SAUCE

24 x 375ml
1097.33
case
45.72 each



HASTY TASTY THIN SOYA SAUCE

24 x 250ml
676.90
case
28.20 each



HASTY TASTY THICK SOYA SAUCE

24 x 250ml
861.37
case
35.89 each





EXCLUDING NAMIBIA & BOTSWANA.



ILLOVO SQUEEZE BOTTLE SYRUP ASSORTED

4 x 6 x 500g
771.73
case
32.16 each



ILLOVO TRADITIONAL/ GOLDEN SYRUP

16 x 1Kg
860.60
case
53.79 each



INTERNATIONAL FOOD GROUP

RSA & BOTSWANA ONLY.



PASTA JOY SPAGHETTI / MACARONI

4 x 3Kg
283.99
case
71.00 each
20 x 500g
229.89
case
11.49 each

PASTA JOY PENNE/ FUSILLI/ ELBOWS/ SHELLS

20 x 500g
245.12
case
12.26 each

JOY NOODLES ASSORTED

8 x (5 x 70g)
127.96
case
16.00 each



**EARLY MORNING
QUICK OATS**

10 x 1kg

250.55
case

25.06 each



WONDER COOKIES

20 x 120g

174.30
case

8.71 each



**HAPPY VALLEY RICE
PUFFS ASSORTED**

8 x 350g/ 400g

204.81
case

25.60 each

**KENSINGTON SAUCE
ASSORTED**

36 x 88ml

301.98
case

8.39 each



**WOW! PEANUT BUTTER
SMOOTH**

2 x 6 x 800g

588.26
case

49.02 each

4 x 6 x 400g

588.26
case

24.51 each



**GOLDEN ROUNDS POTATO
CHIP BISCUITS ASSORTED**

24 x 80g

169.95
case

7.08 each



CELEBRATE



RSA ONLY. EXCLUDING BOTSWANA.

PHENDULA TIPS BLACK TEA

4 x 6 x 100's
517.12
 case
 21.55 each



PHENDULA TIPS BLACK TEA

6 x 10 x 26's
512.87
 case
 8.55 each



LAAGER TEA BAGS ROOIBOS TAGLESS

6 x 4 x 80's
897.39
 case
 37.39 each



LAAGER TEA BAGS ROOIBOS

4 x 6 x 40's
538.64
 case
 22.44 each



TEECO TEA BAGS

4 x 6 x 100's
516.80
 case
 21.53 each



TEECO TEA BLACK POUCH

4 x 12 x 26's
410.29
 case
 8.55 each



TETLEY BLACK TEA

6 x 4 x 102's
746.72
 case
 31.11 each



**TEA TIME BLACK TEA
POUCH**

4 x 6 x 100's

471.20
case

19.63 each



**TEA TIME BLACK TEA
POUCH**

4 x 6 x 26's

474.38
case

7.91 each



JOYA BRANDS

Amajoya

**EXCLUDING NAMIBIA &
BOTSWANA.**

AMAJOYA ASSORTED

24 x 125g

400.55
case

16.69 each



**AMAJOYA TOFFEE WITH
CHOCOLATE ASSORTED**

24 x 100g

426.59
case

17.77 each



**CELEBRATE
WITH US**

**WITH THESE GREAT
SAVINGS**

Kellogg's

NATIONAL - ALL STORES.



KELLOGG'S CORN FLAKES (CARTON)

12 x 1Kg

807.38

case

67.28 each

MOQ: 720 CASES, EXCLUDES R50K PER 720 CASES CORN FLAKES 1KG. EXCLUDES 3% TRUCK DC LOADED AS DIRECT TALLY. EXCLUDES R7K TRUCK ASSIST FROM UMS. LAST DELIVERY DATE 31/05/2024. ORDERS TO BRONWIN SAMUEL & SAorders@kellogg.com

KELLOGG'S FROOT LOOPS/ STRAWBERRY POPS

16 x 350g

684.48

case

42.78 each



KELLOGG'S ALL BRAN FLAKES CARTON

12 x 750g

743.61

case

61.97 each



KELLOGG'S RICE KRISPIES CEREAL VANILLA

16 x 400g

667.50

case

41.72 each



KELLOGG'S COCO POPS/ COCO POPS BIG 5/ CEREAL CRUNCHERS/ CHOCO'S

16 x 340g/ 350g

684.48

case

42.78 each



Kellogg's

TOLORAM

**NATIONAL - ALL STORES.
EXCLUDES 3% BULK.
EXCLUDES 3.4% DC
ALLOWANCE ON
36 PALLETS.
18 PALLETS = R4K AD HOC
36 PALLETS = R10K AD HOC**



KELLOGG'S NOODLES ASSORTED

32 x 70g
170.25
 case
 5.32 each



KELLOGG'S NOODLES ASSORTED

8 x (5 x 70g)
211.09
 case
 26.39 each



**RSA & LESOTHO ONLY.
NO DIRECT ORDERS.
DELIVERY NDD.
ORDERS TO BE SENT TO:
sheryl.moonilall@lipton.
com**

JOKO LOOSE TEA BLACK

32 x 10 x 50g
3906.46
 case
 12.21 each



JOKO TAGLESS TEABAGS 10'S STRIPS

6 x 20 x 10's
937.60
 case
 7.81 each



JOKO TAGLESS TEA BAGS 100'S

12 x 4 x 100's
2207.51
 case
 45.99 each



GLEN TAGLESS TEA BAGS POUCH

4 x 12 x 26's
599.35
 case
 12.49 each





AN OCEANA GROUP COMPANY

**RSA ONLY. EXCLUDING
BOTSWANA, LESOTHO,
SWAZILAND & NAMIBIA.**

LUCKY STAR CHAKALAKA ASSORTED

12 x 410g

175.69
case

14.64 each



LUCKY STAR BAKED BEANS IN TOMATO SAUCE

12 x 410g

139.99
case

11.67 each



LUCKY STAR SOYA MINCE & VEGETABLE STEW ASSORTED

12 x 400g

143.14
case

11.93 each



LUCKY STAR CORNED MEAT ASSORTED

12 x 300g

338.64
case

28.22 each



LUCKY STAR SHREDDED TUNA ASSORTED

4 x 6 x 170g

448.11
case

18.67 each



LUCKY STAR TUNA CHUNKS ASSORTED

4 x 6 x 170g

533.97
case

22.25 each



TOP ONE CORNED MEAT ASSORTED

12 x 300g

338.64
case

28.22 each



LUCKY STAR SARDINES ASSORTED

5 x 10 x 120g

895.30
case

17.91 each



Martin and Martin

NATIONAL - ALL STORES.

BEENO MALLOWS/ SHAPES ASSORTED

4 x 500g

225.40
case

56.35 each



BEENO SMALL/ MEDIUM/ LARGE BISCUITS ASSORTED

12 x 800g

688.60
case

57.38 each



EPOL WET DOG FOOD ASSORTED

6 x 820g

119.95
case

19.99 each



HUSKY WET DOG FOOD ASSORTED

6 x 775g

144.26
case

24.04 each

PAMPER DRY CAT/ KITTEN FOOD ASSORTED

8 x 2Kg

1059.38
case

132.42 each



PAMPER FINE CUTS PET FOOD ASSORTED

4 x 12 x 85g

405.72
case

8.45 each

12 x 6 x 85g

619.85
case

8.61 each



PAMPER MULTIPACK ASSORTED

36 x 85g

326.83
case

9.08 each



PAMPER FINE CUT WET FOOD CATS & DOGS ASSORTED

36 x 85g

326.83
case

9.08 each



NATIONAL - ALL STORES.



MIAMI ANYTHING GOES TOMATO MIX

12 x 410g

204.37
case

17.03 each



MIAMI ATCHAR ASSORTED

12 x 380g/ 400g

354.83
case

29.57 each



MIAMI RELISH ASSORTED

6 x 450g

107.78
case

17.96 each



EXCLUDING NAMIBIA & BOTSWANA. EXCLUDING 2% BULK ON 200 CASES. MEMBER WILL RECEIVE R295 ON FULL PALLETS OF TEA. CLAIM DIRECT FROM SUPPLIER.



ELEVEN O'CLOCK TAGLESS

15 x 160's

1365.18
case

91.01 each

MOQ: 24 CASES

6 x 4 x 80's

1123.93
case

46.83 each

MOQ: 24 CASES

ELEVEN O'CLOCK ROOIBOS STRIP BAG

6 x 20 x 10's

1037.88
case

8.65 each

MOQ: 42 CASES



**TRINCO TEA BAGS BLACK
TEA STRIP PACK**

6 x 20 x 10's

589.56
case

4.91 each

MOQ: 42 CASES



**TRINCO TEA BAGS
BLACK TEA**

12 x 12 x 26's

1557.25
case

10.81 each

MOQ: 24 CASES



**FRESHPAK TEA BAGS
ROOIBOS STRIP**

6 x 20 x 10's

1042.02
case

8.68 each

MOQ: 42 CASES



FRESHPAK TAGLESS

15 x 160's

1252.50
case

83.50 each

MOQ: 24 CASES



**FIVE ROSES AFRICAN
BLEND NEW**

16 x 200's

1045.41
case

65.34 each

MOQ: 16 CASES



6 x 20 x 10's

589.78
case

4.91 each

MOQ: 42 CASES

**FIVE ROSES TEABAGS
SELECT AFRICAN BLEND**

8 x 6 x 102's

1782.31
case

37.13 each

MOQ: 16 CASES



**FIVE ROSES TEA LEAF
BLACK TEA**

3 x 4 x 500g

1076.77
case

89.73 each

MOQ: 45 CASES

6 x 8 x 125g

1135.17
case

23.65 each

MOQ: 36 CASES



**FIVE ROSES STRIP PACK
TEABAGS BLACK TEA**

6 x 20 x 10's

791.92
case

6.60 each

MOQ: 42 CASES



**FIVE ROSES TAGLESS
TEABAGS**

16 x 200's

1667.00
case

104.19 each

MOQ: 16 CASES



**EXCLUDING NAMIBIA & BOTSWANA.
EXCLUDING 2% BULK ON 200 CASES COFFEE.
MEMBER WILL RECEIVE R440 ON FULL PALLETS OF COFFEE. CLAIM DIRECT FROM SUPPLIER.**

**FRISCO COFFEE
GRANULES GUSSET**

12 x 750g

1183.55
case

98.63 each

MOQ: 25 CASES



**FRISCO/ KOFFIEHUIS INSTANT
COFFEE ASSORTED**

4 x 6 x 100g

641.32
case

25.97 each

MOQ: 90 CASES



**EXCLUDING NAMIBIA & BOTSWANA.
EXCLUDING 2% BULK ON 200 CASES COFFEE.
MEMBER WILL RECEIVE R440 ON FULL PALLETS OF COFFEE. CLAIM DIRECT FROM SUPPLIER.**

**FRISCO INSTANT
COFFEE ORIGINAL**

12 x 750g
1366.11
 case
 113.84 each

MOQ: 25 CASES



**FRISCO INSTANT
COFFEE ORIGINAL**

4 x 6 x 250g
1130.22
 case
 47.09 each

MOQ: 40 CASES



**FRISCO/ KOFFIEHUIS
COFFEE GRANULES TIN**

4 x 6 x 250g
1130.22
 case
 47.09 each

MOQ: 40 CASES

**KOFFIEHUIS COFFEE
INSTANT MEDIUM/ FULL
ROAST**

12 x 750g
1366.11
 case
 113.84 each

MOQ: 25 CASES

4 x 6 x 100g
623.25
 case
 25.97 each

MOQ: 90 CASES

4 x 6 x 250g
1130.22
 case
 47.09 each

MOQ: 40 CASES



BISCUITS

**EXCLUDING NAMIBIA & BOTSWANA.
EXCLUDING 2% BULK ON 300 CASES.**

BAKERS RED LABEL BISCUITS ASSORTED

12 x 200g

225.83
case

18.82 each



BAKERS CHOC-KITS ASSORTED

12 x 200g

364.61
case

30.38 each

BAKERS ROMANY CREAMS ASSORTED

12 x 200g

364.61
case

30.38 each



WILLARDS

EXCLUDING NAMIBIA & BOTSWANA.

JUMPIN JACK POPCORN ASSORTED

13 x 90g/100g

207.69
case

15.98 each



WILLARDS CHEAS NAKS ASSORTED

28 x 135g

316.17
case

11.29 each



WILLARDS CRINKLE CUT ASSORTED

20 x 120g

282.63
case

14.13 each



BIG KORN BITES CORN CHIPS ASSORTED

18 x 120g

247.15
case

13.73 each



Nestlé

DAIRY

NATIONAL - ALL STORES.

NESPRAY MILK POWDER

16 x 400g

823.89
case

51.49 each



NESTLE IDEAL EVAPORATED MILK REGULAR

4 x 6 x 380g

663.84
case

27.66 each



NESTLE GOLD CROSS/CONDENSED MILK SWEETENED

4 x 6 x 385g

755.77
case

31.49 each



NESTLE DESSERT CREAM

4 x 6 x 290g

630.18
case

26.26 each



NESTLE CARAMEL TREAT

4 x 6 x 360g

811.38
case

33.81 each



Nestlé

FOOD

NATIONAL - ALL STORES.



MAGGI 2 MINUTE NOODLES ASSORTED

12 x (5 x 68g)

355.00
case

27.92 each

Nestlé

INFANT NUTRITION

NATIONAL - ALL STORES.

NESTUM STAGE 1/2 PROBIOTIC CEREAL ASSORTED

4 x 6 x 250g

623.68
case

25.99 each



CERELAC STAGE 1/2/3 & 4 ASSORTED

4 x 6 x 250g

950.65
case

39.61 each



NESTUM STAGE 3 PROBIOTIC CEREAL ASSORTED

4 x 6 x 250g

642.15
case

26.76 each



CELEBRATE WITH US WITH THESE GREAT SAVINGS



**PIONEER
FOODS**

BEVERAGES: CERES

EXCLUDING NAMIBIA & BOTSWANA. EXCLUDES 2% TRUCKLOAD ALLOWANCE & R5K PER TUCKLOAD SUPPORT. ALLOWANCES TO BE CLAIMED AT STORE WITH SUPPLIER.



LIQUI FRUIT JUICE ASSORTED

4 x 6 x 300ml

275.61
case

11.48 each

4 x 6 x 200ml

181.05
case

7.54 each



**CARIBBEAN
CONCENTRATE
ASSORTED**

12 x 1Ll

164.90
case

13.74 each

**DALY'S SQUASH
ASSORTED**

6 x 1.5Ll

236.13
case

39.35 each



FRUITREE ASSORTED

12 x 1Ll

241.74
case

20.14 each

4 x 6 x 200ml

139.68
case

5.82 each

**FRUITREE JUICE GLASS
BOTTLE ASSORTED**

4 x 6 x 350ml

255.90
case

10.66 each





**PIONEER
FOODS**

ESSENTIAL

**RSA ONLY. EXCLUDING
BOTSWANA, LESOTHO,
SWAZILAND & NAMIBIA.**



SELECT RICE

10 x 2Kg

381.32
case

38.13 each

10 x 1Kg

195.05
case

19.50 each

**SPEKKO PARBOILED
RICE ORANGE**

10 x 2Kg

437.36
case

43.74 each



**SPEKKO PARBOILED RICE
BLUE**

10 x 2Kg

383.52
case

38.35 each

KZN ONLY.



**PASTA GRANDE
SPAGHETTI/ MACARONI**

10 x 1Kg

290.66
case

29.07 each

20 x 500g

290.66
case

14.53 each



**WHITE STAR INSTANT
MAIZE PORRIDGE
ASSORTED**

4 x 2Kg

177.94
case

44.48 each

10 x 1Kg

228.73
case

22.87 each

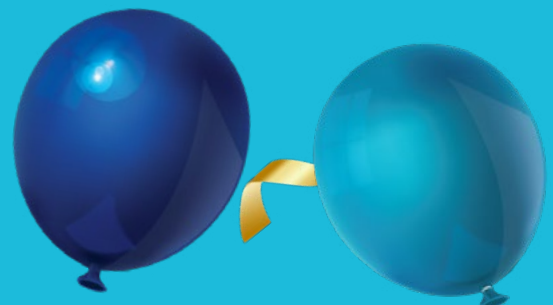


**SASKO CAKE FLOUR
PAPER**

8 x 2.5Kg

291.21
case

36.40 each





**PIONEER
FOODS**

GROCERIES
**EXCLUDING NAMIBIA &
BOTSWANA.**



BOKOMO WEET- BIX

12 x 1.35kg
862.34
case
71.86 each

PALLET DEAL.
MOQ: 36 CASES.



**BOKOMO WEET-BIX
ORIGINAL**

24 x 187g
317.99
case
13.25 each

MOQ: 27 CASES.



**WELLINGTON'S SQUEEZE
BOTTLE SWEET CHILLI
SAUCE**

12 x 700ml
457.21
case
38.10 each

MOQ: 90 CASES = 1 PALLET.

**WELLINGTON CHUTNEY
SQUEEZE CHUTNEY
ASSORTED**

12 x 450g
289.87
case
24.16 each

**MOQ: 108 CASES =
1 PALLET**



**WELLINGTON'S
TOMATO SAUCE**

12 x 700ml
333.10
case
27.76 each

MOQ: 90 CASES = 1 PALLET.



MOIRS JELLY ASSORTED

8 x 6 x 80g
425.55
case
8.87 each

**MOQ: 90 CASES =
1 PALLET.**



**MOIRS CUSTARD POWDER
VANILLA**

6 x 6 x 250g

696.84
case

19.36 each

**PALLET DEAL.
MOQ: 30 CASES.**



**MOIRS CUSTARD
REFILL**

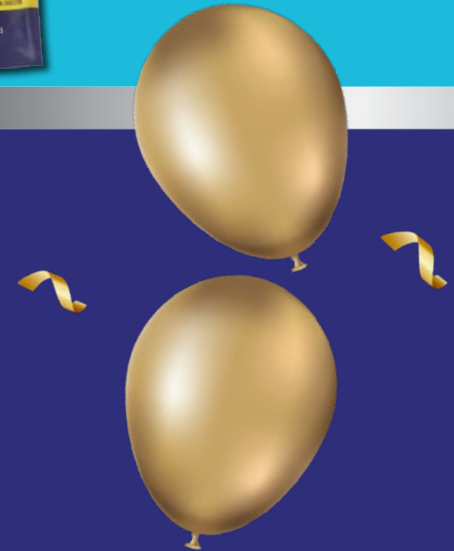
12 x 500g

342.20
case

28.52 each

DRAW AS REQUIRED.

**CELEBRATE
WITH US
WITH THESE GREAT
SAVINGS**



Premier

**EXCLUDING NAMIBIA &
BOTSWANA.**

**NYALA/ IWISA EASY COOK
SAMP (PLASTIC)**

10 x 1kg

164.25
case

16.42 each

KZN ONLY.



**IWISA/ INVICTA SAMP
PLASTIC**

5kg

71.35
each



**IWISA/ NYALA INSTANT
BREAKFAST PORRIDGE
ASSORTED**

10 x 1Kg
200.94
 case
 20.09 each



NYALA SAMP

4 x 5Kg
353.19
 case
 88.30 each



**IWISA/ INVICTA EASY
COOK SAMP**

10 x 1Kg
142.69
 case
 14.27 each



**IWISA/ NYALA/ SUPER SUN
MAIZE MEAL SUPER**



10 x 1Kg 125.54 case 12.55 each	12.5Kg 186.98 each
4 x 2.5Kg 120.01 case 30.00 each	10Kg 114.99 each
8 x 2.5Kg 242.02 case 30.25 each	5Kg 60.00 each
4 x 5Kg 240.01 case 60.00 each	

SNOWFLAKE EASYMIX/ 5-IN-1 ASSORTED

10 x 1Kg

290.02
case

29.00 each



SNOWFLAKE BAKING POWDER REFILL

12 x 500g

464.91
case

38.75 each

12 x 200g

275.75
case

22.98 each

SNOWFLAKE CAKE FLOUR

12.5Kg

183.25
each

8 x 2.5Kg

288.12
case

36.02 each

10Kg

141.60
each

20 x 1Kg

306.94
case

15.35 each



4 x 5Kg

294.43
case

73.61 each



**Premier
BEVERAGES**

**EXCLUDING NAMIBIA &
BOTSWANA.**



IWISA NO.1 MAGEU/ NYALA AMAHWU ASSORTED

10 x 1Ll

148.96
case

14.90 each



PROMASIDOR

**RSA ONLY. EXCLUDING
BOTSWANA, LESOTHO,
SWAZILAND & NAMIBIA.**

**DRINK-O-POP
POWDERED SOFT
DRINK ASSORTED**

8 x 72's

554.65
case

69.33 each



**JABA SAUCE
PERI-PERI
ASSORTED**

3 x 4 x 250ml

324.01
case

27.00 each

**BUY ANY 5 CASES OF
250ML JABA PERI PERI AND
RECEIVE 1 CASE FREE.**

**JABA CHICKEN STOCK
SACHETS**

24 x 10 x 15g

318.70
case

0.95 each



**CELEBRATE
WITH US
WITH THESE GREAT
SAVINGS**

NATIONAL - ALL STORES.

**ROBERTSONS
BICARBONATE OF SODA**

4 x 50 x 14g

245.99
case

1.23 each

**ROBERTSONS ESSENCE
ASSORTED**

2 x 10 x 40ml

153.11
case

7.66 each



**ROBERTSONS EPSOM
SALTS**

4 x 50 x 14g

224.43
case

1.12 each



**RSA ONLY. EXCLUDING
BOTSWANA, LESOTHO,
SWAZILAND & NAMIBIA.
MOQ: 10 PALLETS MIXED
IN FULL. LAST DELIVERY
10/06/2024.**

BULL BRAND CORNED BEEF

6 x 300g

155.90
case

26.00 each

**HAZELDENE JAM
MIXED FRUIT**

6 x 900g

190.98
case

31.83 each

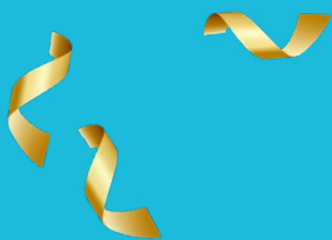


**RHODES JAM SMOOTH
APRICOT/ MIXED FRUIT**

6 x 900g

190.98
case

31.83 each





**RHODES BEETROOT
SLICED/ GRATED**

6 x 780g
126.36
 case
 21.06 each

CELEBRATE
 WITH US
 WITH THESE GREAT
SAVINGS



BEVERAGES

**RSA ONLY. EXCLUDING
 BOTSWANA, LESOTHO,
 SWAZILAND & NAMIBIA.
 MOQ: 10 PALLET MIXED
 IN FULL. LAST DELIVERY
 10/06/2024.**



**RHODES 100% FRUIT
 JUICE ASSORTED**

4 x 6 x 200ml
139.44
 case
 5.81 each



PAKCO

**RSA ONLY. EXCLUDING
 BOTSWANA, LESOTHO,
 SWAZILAND & NAMIBIA.
 MOQ: 10 PALLET MIXED
 IN FULL. LAST DELIVERY
 10/06/2024.**

**HINDS SOUTHERN GRILL
 ALL IN ONE SEASONING
 ASSORTED**



12 x 200g
202.80
 case
 16.90 each

**HINDS SOUTHERN
 COATING ASSORTED**

4 x 6 x 200g
381.60
 case
 15.90 each





**RSA ONLY. EXCLUDING
BOTSWANA, LESOTHO,
SWAZILAND & NAMIBIA.**

**MILO CEREAL BAR
DISPENSER**

6 x (24 x 23.5g)

945.21
case

157.53 each

MILO CEREAL

14 x 320g

561.44
case

40.10 each

NESQUIK CEREAL BAG

24 x 250g

756.06
case

31.50 each



**DAILY FIX GRANOLA
ASSORTED**

10 x 350g

341.09
case

34.11 each



SGX SALES



NATIONAL - ALL STORES.

**NANDO'S PERINAISE
SQUEEZE ASSORTED**

6 x 265g

205.10
case

34.18 each

**NANDO'S SAUCE
ASSORTED**

6 x 250ml

205.10
case

34.18 each





**RSA ONLY. EXCLUDING
BOTSWANA, LESOTHO,
SWAZILAND & NAMIBIA.**



**BETAFRY PURE
VEGETABLE COOKING OIL**

20L
600.85
each

20L
620.55
each

36 PALLETS & ABOVE

1 TO 6 PALLETS.

20L
608.73
each

20L
610.70
each

15 TO 35 PALLETS.

7 TO 14 PALLETS.

CRISPA PALM OIL

20L
622.52
each

20L
630.40
each

31 PALLETS & ABOVE.

7 TO 14 PALLETS.

20L
628.43
each

20L
643.21
each

15 TO 30 PALLETS.

1 TO 6 PALLETS.



CRISPA GOLD COOKING OIL

20L
723.98
each

20L
728.90
each

36 PALLETS & ABOVE.

7 TO 14 PALLETS.

20L
726.93
each

20L
743.67
each

15 TO 35 PALLETS.

1 TO 6 PALLETS.



HOLSUM FAT WHITE

50 x 125g

362.48
case

7.25 each

50 x 125g

360.21
case

7.20 each

10 CASES TO 4 PALLETS. 5 TO 10 PALLETS.

50 x 125g

353.42
case

7.07 each

NORTHERN DIVISION ONLY.
FROM 1 PALLET.



SOUTH BAKELS



BAKELS SNOWBALL MIX

12.50kg

359.23
each



BAKELS RELEASE 30

25kg

447.98
each



BAKELS 5% BREAD PREMIX

25kg

645.21
each



BAKELS BAKING POWDER

1kg

48.35
each

20kg

746.95
each



SpiceMecca®

NATIONAL - ALL STORES.

SPICE MECCA ASSORTED SPICES

10 x 25g/ 50g/ 125g

960.32
case

9.60 each



CELEBRATE
WITH US
WITH THESE GREAT
SAVINGS

thokoman

NATIONAL - ALL STORES.

THOKOMAN PEANUT BUTTER ASSORTED

6 x 1Kg

405.37
case

67.56 each

THOKOMAN PEANUT BUTTER 400G + 80G FREE ASSORTED

6 x 480g

206.36
case

34.39 each



TIGER BRANDS



BEVERAGES

**NATIONAL - ALL STORES.
EXCLUDES TRUCK LOAD
ALLOWANCE.**

OROS RTD ASSORTED

24 x 200ml

140.95
case

5.87 each



**ENERGADE BOOST ENERGY
DRINK ASSORTED**

24 x 440ml

226.20
case

9.42 each



TIGER BRANDS



CULINARY

**NATIONAL - ALL STORES.
EXCLUDES 2% TRUCK
ALLOWANCE. EXCLUDES
R10K MIXED TRUCK
SUPPORT.
CLAIM FROM UMS.**

**BLACK CAT PEANUT
BUTTER ASSORTED**

6 x 800g

452.76
case

75.46 each

6 x 400g

229.28
case

38.21 each



**HUGO'S MIXED FRUIT
JAM**

6 x 900g

176.35
case

29.39 each



**KOO CHAKALAKA
ASSORTED**

12 x 410g

226.92
case

18.91 each



**CROSSE & BLACKWELL
MAYONNAISE**

2 x 3kg

305.69
case

152.84 each

6 x 1.5kg

440.97
case

73.50 each



**MRS BALLS
CHUTNEY ASSORTED**

3 x 8 x 470g

775.98
case

32.33 each



**BENNY STOCK
CUBES**

4 x 24 x 12's

1127.69
case

11.75 each

4 x 12 x 24's

799.21
case

16.65 each



TIGER BRANDS



**FATTIS & MONIS
NATIONAL - ALL STORES.
R10K ON FULL TRUCK
LOADS OF 34 PALLETS**

**FATTIS & MONIS PASTA
MACARONI**

3kg

98.06
each



**FATTIS & MONIS
SPAGHETTI/ MACARONI**

20 x 500g

284.26
case

14.21 each



TIGER BRANDS



KING FOODS

**RSA ONLY. EXCLUDING
BOTSWANA, LESOTHO,
SWAZILAND & NAMIBIA.
R10K ON FULL TRUCK LOAD
MIXED.
CLAIM FROM UMS.**

**ACE INSTANT
PORRIDGE ASSORTED**

10 x 1kg
174.24
case
17.42 each



**MORVITE READY TO
EAT ASSORTED**

10 x 1kg
273.58
case
27.36 each



TIGER BRANDS



PURITY

**NATIONAL - ALL STORES.
192 PALLETS. LAST ORDER
31/05/2024.
LAST DELIVERY
07/06/2024.**

**ACE BABY FOOD PUREED
& MAIZE POUCHES
SPOUTLESS ASSORTED**

12 x 100ml
96.43
case
8.04 each



**PURITY POUCHES
BABY FOOD ASSORTED**

12 x 110ml
140.73
case
11.73 each



TIGER BRANDS



SNACKS & TREATS

**NATIONAL - ALL STORES.
EXCLUDING TRUCK
ALLOWANCE DEAL.**



**BEACON LARGE BARS
ASSORTED**

40's
338.89
case

**WONDERBAR
CHOCOLATE BAR
ASSORTED**

24's
103.69
case



**BEACON MALLOWS PINK &
WHITE PREPACK**

12 x 400g
337.63
case
28.14 each



**BEACON ALLSORTS
LIQUORICE ASSORTED**

24's
253.89
case



**JUNGLE ENERGY BARS
ASSORTED**

30's
290.32
case



**CELEBRATE
2024**

**BEACON SLAB CHOCOLATE
BLACK CAT PEANUT**

40's
364.45
 case

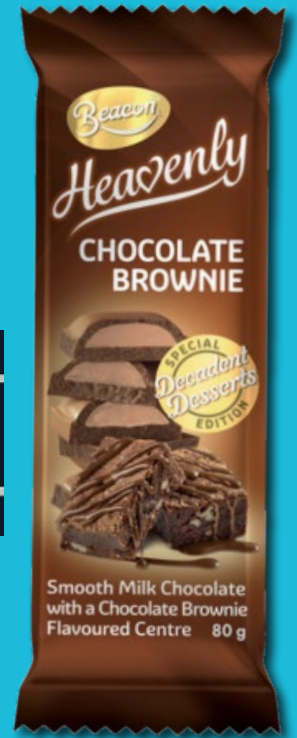
BLACK CAT/ TV BAR

12 x 80g
169.43
 case
 14.12 each



**BEACON
CHOCOLATE SLAB
HEAVENLY**

12 x 80g
169.43
 case
 14.12 each



**BEACON
CHOCOLATE SLAB
ASSORTED**

12 x 80g
155.39
 case
 12.95 each



**MAYNARDS WINE GUMS
ROLLS ASSORTED**

36's
284.63
 case

**BEACONS JELLY TOTS
WHITE CHOCOLATE BAR/
BLACK CAT BAR**

40's
364.45
 case





NATIONAL - ALL STORES.

TRUMP'S CHOCOLATE VERMICELLI

12 x 75g
209.98
 case
 17.50 each



TRUMP'S RAINBOW VERMICELLI

12 x 50g
209.98
 case
 17.50 each



TRUMP'S COCONUT

24 x 500g
1186.67
 case
 49.44 each

6 x 6 x 200g
842.59
 case
 23.41 each

12 x 6 x 100g
827.22
 case
 11.49 each



TRUMP'S 100'S & 1000'S

12 x 75g
220.30
 case
 18.36 each



CELEBRATE 2024



Twizza

**RSA ONLY. EXCLUDING
BOTSWANA, LESOTHO,
SWAZILAND & NAMIBIA.**

TWIZZA 2LT ASSORTED

6 x 2Lt
62.55
case
10.42 each

**EASTERN CAPE & KZN
ONLY. MOQ: 80 CASES
= 1 PALLET.**

6 x 2Lt
60.29
case
10.05 each

**EASTERN CAPE & KZN
ONLY. TRUCK LOAD
= 2560 CASES.**

6 x 2Lt
61.98
case
10.33 each

**FREE STATE, NORTHERN
CAPE & LESOTHO ONLY.
MOQ: 80 CASES - 1 PALLET.**

6 x 2Lt
60.66
case
10.11 each

**FREE STATE, NORTHERN
CAPE & LESOTHO ONLY.
TRUCK LOAD = 2560 CASES.**

6 x 2Lt
64.24
case
10.71 each

**WESTERN CAPE ONLY.
MOQ: 80 CASES = 1 PALLET.**

6 x 2Lt
62.55
case
10.42 each

**WESTERN CAPE ONLY.
TRUCK LOAD = 2560 CASES.**

6 x 2Lt
60.86
case
10.14 each

**NORTH WEST, GAUTENG,
MPUMALANGA & LIMPOPO
ONLY. MOQ: 80 CASES =
1 PALLET.**

6 x 2Lt
59.17
case
9.86 each

**GAUTENG & NORTH WEST
ONLY. TRUCK LOAD = 2560
CASES.**

6 x 2Lt
59.22
case
9.87 each

**LIMPOPO & MPUMALANGA
ONLY.
TRUCK LOAD = 2560 CASES.**





TWIZZA ENERGY ASSORTED

4 x 6 x 500ml
156.09 case
6.50 each

TRUCK LOAD = 240 CASES.



TWIZZA COLA CSD

4 x 3Ll
51.28 case
12.82 each

MOQ: 80 CASES = 1 PALLET.



ELITE/ ROXY ENERGY DRINK ORIGINAL/ SUGAR FREE

4 x 6 x 500ml
156.09 case
6.50 each

TRUCK LOAD = 240 CASES.





WILLOWTON GROUP

RSA ONLY. EXCLUDING BOTSWANA, LESOTHO, SWAZILAND & NAMIBIA.



WOODEN SPOON YELLOW/WHITE MARGARINE BRICK

30 x 500g

629.99
case

21.00 each



SUNSHINE D MARGARINE 60% FAT TUB

12 x 1Kg

444.00
case

37.00 each

SUNSHINE D MARGARINE BRICK

30 x 500g

539.95
case

18.00 each



SUNSHINE D LITE 40% FAT TUB

12 x 1Kg

444.00
case

37.00 each



D'LITE 37% FAT SPREAD TUB

12 x 1Kg

358.85
case

29.90 each



CORDON BLEU 70% MARGARINE BRICK

30 x 500g

507.00
case

16.90 each





famous | brands

EXCLUDING NAMIBIA & BOTSWANA.

WEST COAST SKINNY/ THICK CUT FRIES

10 x 1Kg

384.39
case

38.44 each



WIMPY CHIPS

10 x 1Kg

356.61
case

35.66 each



EXCLUDING NAMIBIA & BOTSWANA.

I & J ORIGINAL FISH FINGERS

12 x 600g

694.80
case

57.90 each



I & J FISH FINGERS

2Kg

202.80
each



I & J BEEFERS BURGERS ASSORTED

12 x 500g

682.79
case

56.90 each



I & J LIGHT & CRISPY HADDOCK FILLETS

12 x 500g

910.80
case

75.90 each





LANCEWOOD®

NATIONAL - ALL STORES.

KIRI CREAM CHEESE 12'S

10 x 200g

619.00
case

61.90 each



LANCEWOOD LAUGHING COW CHEESE WEDGES ASSORTED

40 x 120g

1076.00
case

26.90 each



LANCEWOOD SOUR CREAM 20%

6 x 250ml

173.40
case

28.90 each



LANCEWOOD COTTAGE CHEESE ASSORTED

6 x 250g

218.99
case

36.50 each



LANCEWOOD SAUCE DELIGHT SAUCE ASSORTED

6 x 250ml

179.40
case

29.90 each



LANCEWOOD CREAM CHEESE ASSORTED

6 x 230g

257.40
case

42.90 each





LANCEWOOD GRATED CHEESE ASSORTED

8 x 600g
760.00 case
95.00 each
10 x 200g
349.00 case
34.90 each



LANCEWOOD DRINKING YOGHURT ASSORTED

10 x 225g
98.00 case
9.80 each



RSA ONLY. EXCLUDING BOTSWANA, LESOTHO, SWAZILAND & NAMIBIA.

MC GAIN SKINNY/ SLAP CHIPS

12 x 1Kg
510.41 case
42.53 each



MC GAIN MIXED VEGETABLES

12 x 1Kg
496.09 case
41.34 each



MC GAIN COUNTRY CROP/ GARDEN MIX

12 x 1Kg
506.13 case
42.18 each



MC GAIN STIR FRY ASSORTED

14 x 700g
508.03 case
36.29 each



**MC CAIN FROZEN
VEGETABLES/ STIR FRY
ASSORTED**

24 x 250g

272.59
case

11.36 each



HARVESTIME MIXED VEG

12 x 900g

308.20
case

25.68 each



**HARVESTIME COUNTRY
MIX**

12 x 900g

390.49
case

32.54 each



RFG TODAYS

**RSA ONLY. EXCLUDING
BOTSWANA, LESOTHO,
SWAZILAND & NAMIBIA.**



**TODAY PARTY PACK
SAUSAGE ROLLS
ASSORTED**

12 x 40's

801.79
case

66.82 each

**TODAY SAUSAGE ROLLS
ORIGINAL**

6 x 30's

577.77
case

96.30 each



**CELEBRATE
2024
WITH GREAT
SAVINGS**

**TODAY PUFF/ SHORTCRUST
PASTRY**

20 x 400g

431.35
case

21.57 each



MAMA'S PIES ASSORTED



12 x 6's
1054.11
 case
 87.84 each

BIG JACK BAKED FROZEN PIES ASSORTED



24 x 160g
389.09
 case
 16.21 each



**RSA & NAMIBIA ONLY.
 EXCLUDING BOTSWANA,
 LESOTHO & SWAZILAND.**



SEA HARVEST BABY HAKE IN BAG

12 x 800g
742.80
 case
 61.90 each

SEA HARVEST OVEN CRISP ASSORTED



12 x 400g
697.20
 case
 58.10 each

SEA HARVEST HAKE BAKES ASSORTED



12 x 360g
472.80
 case
 39.40 each

**SEA HARVEST EXTRA
CHUNKY TEMPURA/
CLASSIC**

12 x 280g
366.00
 case
 30.50 each



**SEA HARVEST FISH
FINGERS**

12 x 800g
897.60
 case
 74.80 each



RSA & LESOTHO ONLY.



**RAMA ORIGINAL CHILLED
SPREAD 60% FAT TUB**

24 x 500g
761.52
 case
 31.73 each

MOQ: 25 CASES.

**RAMA ORIGINAL SPREAD
70% FAT BRICK**

48 x 125g
402.70
 case
 8.39 each

MOQ: 50 CASES.



**RAMA SPREAD FOR BREAD
CHILLED 37% FAT BRICK**

30 x 500g
437.32
 case
 14.58 each

MOQ: 35 CASES.





**RAMA SPREAD FOR BREAD
CHILLED 37% FAT TUB**

12 x 1kg
467.35
 case
 38.95 each

MOQ: 25 CASES.

**RAMA ORIGINAL SPREAD
60% FAT TUB**

12 x 1kg
620.55
 case
 51.71 each



**RAMA ORIGINAL
CHILLED 70% FAT
BRICK**

20 x 250g
263.44
 case
 13.17 each

MOQ: 50 CASES.



**RONDO LITE CHILLED 20%
FAT TUB**

16 x 1kg
397.49
 case
 24.84 each

MOQ: 36 CASES.



**STORK COUNTRY SPREAD
CHILLED 40% FAT TUB**

24 x 500g
631.68
 case
 26.32 each





**WOODLANDS
DAIRY**

**RSA ONLY. EXCLUDING
BOTSWANA, LESOTHO,
SWAZILAND & NAMIBIA.**

FIRST CHOICE POWER CUP ASSORTED



12 x 150g
83.50
case
6.96 each

FIRST CHOICE INDIVIDUAL WRAPPED 54 SLICES ASSORTED



8 x 900g
877.28
case
109.66 each

FIRST CHOICE MILKI FLAVOURED MILK ASSORTED

4 x 6 x 250ml
209.33
case
8.72 each



FIRST CHOICE BUTTER SPREAD

24 x 500g
1408.85
case
58.70 each



FIRST CHOICE LONG LIFE UHT MILK ASSORTED

10 x 500ml
90.06
case
9.01 each



FIRST CHOICE LONG LIFE UHT MILK ASSORTED

10 x 500ml
88.10
case
8.81 each

**RSA - EXCLUDING
EASTERN CAPE. DIRECT
LOAD DEAL ONLY MIXED
TRUCK.
MOQ: 6426 CASES.
(LIMITED TO 10 TRUCKS
ON TOTAL 500ML).**

**EASTERN CAPE ONLY.
DIRECT LOAD DEAL ONLY
MIXED TRUCK.
MOQ: 6426 CASES.
(LIMITED TO 10 TRUCKS
ON TOTAL 500ML).**